



ENKEI

2024 Wheel Catalog



Visit our website at [Enkei.com](https://www.enkei.com) | [@enkeiwheels](https://www.instagram.com/enkeiwheels)



World Leader in Street and Race Wheels

Custom aftermarket wheels are as much a part of who we are as the clothes we wear, the vehicles we drive and of course the performance that we expect. ENKEI custom wheels deliver the latest in wheel designs, composite alloy technology such as, casting/forged processes, rigid testing that must pass stringent JGTC Standards and unsurpassed manufacturing facilities. Enkei is dedicated to perfection and delivers the best in aftermarket wheels.

Today, the Enkei group is commercially active throughout Asia, North America, Latin America and Europe, supplying all the largest Japanese car manufacturers and General Motors in the OEM market, as well as countless consumers in the automotive aftermarket. Enkei also produces sophisticated high-tech race wheels for a variety of motorsport, including rallying, drift, sportscar racing and single-seater racing – including supplying lightweight magnesium Formula 1 race wheels to McLaren Honda. Enkei has been an Official Supplier to McLaren F1 Team since 1995.

ENKEI MOTORSPORTS

Enkei has been racing in top competition championships of the world for three decades. As a result of continuous improvement and technological advances, Enkei continues its winning tradition and constantly challenges new horizons in wheel technology.



ONE STEP FORWARD

Since its formation in 1950, Enkei's history has been continuous challenges and adventures to deliver the most innovative and the highest quality wheels to top racers and car enthusiasts. Today, Enkei has grown to be the number one aluminum wheel manufacturer to satisfy demand from leading automakers and aftermarket wheel users around the world. One step forward. With its courage to take the next step ahead of others, Enkei continues to strive to exceed the expectations of the most demanding drivers.

ENKEI WORLD COMPANIES

- ENKEI INTERNATIONAL (Texas, U.S.)
- ENKEI AMERICA (Indiana, Florida, U.S.)
- ENKEI AMERICA MOLDINGS (Indiana, U.S.)
- ENKEI THAI
- ENKEI THAI MOLDINGS
- ENKEI MALAYSIA
- ENKEI ALUMINIUM PRODUCTS (CHINA)
- ENKEI MOLDINGS (Kunshan, CHINA)
- ENKEI ALUMINIUM (Guangdong, CHINA)
- ENKEI INDONESIA
- PT. ENKEI MARUTOYO PAINTING (INDONESIA)
- ENKEI PHILIPPINES
- ENKEI WHEELS (INDIA)
- ENKEI VIETNAM

JAPAN

- ENKEI CORPORATION (HEAD OFFICE)
- ENKEI WHEEL CORPORATION (MANUFACTURING)
- ENKEI ENGINEERING
- ENBISHI ALUMINIUM WHEELS
- ENKEI AUTOMOTIVE
- ENKEI PAINTING
- ENKEI MAKABE
- ENKEI METALS
- ENKEI TEST AND LABORATORY
- ENKEI AUTO ACTIVITY
- ENKEI LOGISPORT
- ENKEI RELATION (OPERATION)
- ENKEI AUDIT AND COMPUTER SERVICES



INDEX BY WHEEL MODEL NUMBER

365 NT03+M (Racing)..... 20	490 PF07 (Racing)..... 17	529 TSR-X (Tuning) 22
379 RPF1 (Racing)..... 09	492 TS9 (Tuning) 29	531 XM-6 (Performance)..... 39
379 RPF1RS (Racing) 08	498 TY-5 (Tuning) 30	533 HORNET (Performance) 44
409 J10 (Performance)..... 46	499 TS-10 (Tuning)..... 25	534 GTC02 (Racing)..... 11
434 FD-05 (Performance) 43	502 PDC (Performance) 46	535 TS-7 (Tuning) 32
441 EDR9 (Performance)..... 43	504 GTC01RR(Racing) 14	536 PX-10 (Performance)..... 41
442 EKM3 (Performance) 42	505 ONX (Performance) 41	537 YX-5 (Performance) 44
446 EV5 (Performance) 42	507 TM-7(Tuning)..... 33	538 CYCLONE (Truck/SUV) 47
448 GW8 (Performance)..... 42	509 DRACO (Performance) 40	539 T6R (Tuning) 22
460 PF01 (Racing) 19, 20	510 VORTEX5 (Performance) 39	540 PF09 (Racing) 10
465 ENKEI92 (Classic)..... 34	512 NT03RR(Racing)..... 15	543 TRIUMPH (Tuning) 23
467 RAIJIN (Tuning) 28	515 TMS (Tuning)..... 29	544 OVERLANDER (Performance) 38
469 LUSSO (Performance) 45	516 TFR (Tuning) 27	545 PF06 (Racing) 07
476 KOJIN (Tuning) 31	517 VULCAN (Performance)..... 37	546 VANQUISH (Tuning)..... 21
477 COMPE (Classic)..... 34	518 PHANTOM (Performance) 40	547 ADVENTURER (Performance) 36
480 M52 (Performance) 45	520 RPT1 (Racing)..... 12	548 GIOTTO (Performance) 35
482 M6 (Truck/SUV)..... 47	521 TS-5 (Tuning) 24	
484 RS05RR (Racing) 16	522 TS-V (Tuning)..... 23	
485 T6S (Tuning) 26	523 PHOENIX (Performance)..... 37	
489 PF01 EVO (Racing) 18	527 PF05 (Racing) 13	

See all Enkei Wheels and size options at ENKEI.COM

Engineering Philosophy

What is the most important consideration when building a wheel? What specifications does a performance wheel require? In general, the most recognizable performance aspect for users is light weight. You will know the weight difference by simply picking up a wheel. Most drivers can also feel the difference in steering response. Since an automobile wheel is a rolling object, the lightness of the wheel plays into the inertial weight. Enkei's focus is not limited to the lightness, however. To attain maximum wheel performance, Enkei also focuses on stiffness and strength.

A high quality wheel requires all three elements: light weight, stiffness, and strength.

STIFFNESS

Stiffness is the basis of wheel performance. What is "stiffness"? If a rim is stiff, it will resist deformation when it is subjected to force. Although we consider metal as "hard", metal does have a tendency to deform when force is applied and return to the original shape when the force is eliminated. Stiffness is often confused with strength, but it is different as strength is a measure of tendency toward breakability. To make the best out of today's high-performance tire, wheels need to have high stiffness to keep the proper connection between the chassis and tires. On the other hand, wheels with low-stiffness could easily be deformed by the load from the tires. Enkei recognizes stiffness is the most important element for high performance wheels.

ALUMINUM EXPLAINED: PRODUCTION METHODS WILL NOT AFFECT STIFFNESS

How can we increase the stiffness of wheels? As long as wheels are made of aluminum alloy, using a different production method does not affect the stiffness of the wheel. That's because all aluminum alloys used for forging and casting create same material property with identical stiffness.

Comparison of Wrought aluminum alloy and Cast aluminum alloy

Material	Specific gravity	Young's modulus*
Wrought aluminum alloy	2.70MG/cm ³	70GPa
Cast aluminum alloy	2.68MG/cm ³	70GPa

* Young's modulus is a measure of elasticity, equal to the ratio of the stress acting on a substance to the strain produced.

You may think forging process creates stronger materials. However, when forged and cast aluminum alloys are measured by the Young's modulus, it shows almost no difference between two methods. Forged and casted aluminum alloys are nearly identical in specific gravity as well. Therefore, if you make an exact same shape of wheels using forging and casting method, the weight of those wheels should be the same. What is the advantage of the forging process, then? It is an ability to produce higher material strength.

Generally speaking, compared with casting, forged material is superior in yield strength and tensile strength. However, no matter how great the material strength, it cannot justify an extreme reduction in weight.

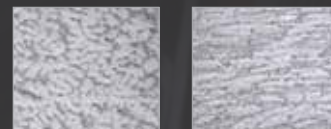
Even with adequate material strength, if wheels lack stiffness, they cannot perform properly even with high-performance tires.



DURVILLE DIE CASTING & MAT PROCESS

Enkei has adopted two technologies – the Durville die casting and MAT process that ensure cast aluminum wheels have strength comparable to forged ones. In the Durville process, molten aluminum alloy is poured into the mold from its inner rim side, with the disc side facing downward. The alloy is rapidly quenched and solidifies, starting at the disc side, creating a finer metallic structure, significantly enhancing tensile strength, yield strength and elongation.

In the MAT process, the wheel rim placed on a mandrel is spun and rolled. This spinning process creates "metal flow" in the metal structure of the aluminum alloy, which is similar to the metal property seen in the forging process.



This hybrid process of casting and forging gives wheel high material strength while keep manufacturing cost more affordable than forged wheels. Additionally, it gives greater freedom of design on the wheel face.

DESIGN CAPABILITY BEHIND THE BEST WHEELS

How does Enkei ensure its wheels have high stiffness? The answer is Enkei's "Design Capability".

To maintain high stiffness under great force, the wheel's cross sectional area in the direction against the force applied needs to be enlarged. Unfortunately, the larger this area is, the heavier the wheel will get. However, if the layout, cross sectional shape of the spokes and the rim profile are designed properly, the wheel can maintain high stiffness without adding weight.

The layout is made possible by Enkei's vast accumulation of wheel design data and the computer aided engineering 3D simulation. In addition, Enkei strives for the largest possible weight reduction by identifying the wheel portions where stress concentration is least likely to occur and shaving down areas that do not affect stiffness.

Enkei's processing techniques ensure the strength of its wheels, and its excellent design capability ensures stiffness and lightness. Enkei's design capability is the most-treasured asset and essential for developing the highest performance wheels.

SPEC-E

All Enkei wheels are engineered to pass rigorous testing. In fact, Enkei established its own test standard called "Spec-E," which is tougher than JWL requirements. Enkei's Spec-E test setting requires a higher drop point in the impact test and 20% more cycles for the rotary bending fatigue and dynamic radial fatigue tests than JWL standards. The Spec-E standard shows Enkei's confidence in its technology and the quality of Enkei wheels.

ENKEI HERITAGE

Enkei started in Japan as "Enshu Keigokin Co. Ltd.," which translates as "light alloy of the Province of Enshu." Enkei's technical knowledge, developed through the manufacturing of aircraft parts, was later utilized in the initial development of aluminum motorcycle and automobile engines. Today Enkei has established itself as a pioneer of aluminum wheel manufacturing. As the recognized global leader of alloy wheel production, Enkei delivers more than 16,000,000 wheels a year and has manufacturing facilities in Japan, the United States, and many Southeast Asian countries. With new horizons to be conquered, Enkei will always continue to move "one step forward."



RACING SERIES

Introducing Enkei's Racing Series. Enkei's experience in producing wheels for racecars is unrivaled. Enkei is actively involved in supplying wheels for Formula 1, WRC, Japan GT Championship, Super Taikyu, Formula Drift and many others. The racetrack is our laboratory. We've taken what we've learned in racing and are proud to offer the same technology found on racetracks all over the world to auto enthusiasts looking for a no compromise wheel solution for their cars. Enkei's state of the art facilities in Japan utilize MAT technology to achieve the ultimate in lightness and strength for our racing series wheels, while maintaining excellent value. When you demand the very best, look no further than Enkei's racing series.



MOST ADVANCED TECHNOLOGY

Enkei developed a new manufacturing process to produce the next generation of aluminum wheels. Most Advanced Technology (MAT) combines one-piece cast wheel technology with a rim-forming "spinning" technique. Use of this new technology of casting and rim forming, is critical to drastically improve the material properties and strength of wheels. In addition, Enkei's rim-rolled technology shapes the rim to improve material elongation without sacrificing the wheel's hardness.

Introducing the Enkei PF06, a nostalgic throwback that exudes a race track vibe. Crafted with precision and excellence, this wheel showcases six sleek spokes that embody a classic 90's design with a modern twist. Available exclusively in an 18-inch size (more sizes available soon).

The wheel's color options are a nod to its heritage, allowing you to choose from white, gold, or black finishes, providing the perfect complement to any vehicle. Manufactured in Japan, you can trust in its superior craftsmanship and attention to detail, ensuring exceptional quality and durability.

Spoke Design:

The sharp 6-spoke design of the Enkei 90's style brings a perfect blend of street style and a nostalgic Japan circuit feel.

Step Rim Design:

The lightweight, rigid, and strong step rim shape adds a sporty touch.

H Cross Spoke:

The "H CROSS SPOKE" achieves weight reduction while maintaining strength and rigidity through precision milling, based on extensive data obtained from years of wheel design and CAE analysis.

New Center Cap:

An elegantly designed center cap enhances compatibility with a wide range of vehicle models.

Package Inclusions:

Includes the center cap, valve, and an EK DAZZLE WHEEL sticker, with instructions on how to attach the sticker provided on the back.



White Machined
(shown with optional included decal)



Gold



Black Machined

PF06

15, 16, 17, 18 - Racing Series

**NEW
2024**

PART NO.	FINISH	SIZE	INSET	PATTERN	BORE	FACE
545-580-4935	BKM, WM, GG	15x8	35	4x100	67	R
545-580-6535	BKM, WM, GG	15x8	35	5x114.3	75	R
545-580-4925	BKM, WM, GG	15x8	25	4x100	67	R
545-580-6525	BKM, WM, GG	15x8	25	5x114.3	75	R
545-680-4930	BKM, WM, GG	16x8	30	4x100	67	R
545-680-6530	BKM, WM, GG	16x8	30	5x114.3	75	R
545-685-6535	BKM, WM, GG	16x8.5	35	5x114.3	75	R
545-685-4928	BKM, WM, GG	16x8.5	28	4x100	67	R
545-770-4938	BKM, WM, GG	17x7	38	4x100	67	F
545-770-4945	BKM, WM, GG	17x7	45	4x100	67	F
545-770-6545	BKM, WM, GG	17x7	45	5x114.3	67	F
545-770-8038	BKM, WM, GG	17x7	38	5x100	67	F
545-775-8045	BKM, WM, GG	17x7.5	45	5x100	75	F
545-775-6545	BKM, WM, GG	17x7.5	45	5x114.3	75	F
545-775-9738	BKM, WM, GG	17x7.5	38	4x98	58	F
545-775-4938	BKM, WM, GG	17x7.5	38	4x100	75	F
545-775-6538	BKM, WM, GG	17x7.5	38	5x114.3	75	F
545-785-4930	BKM, WM, GG	17x8.5	30	4x100	75	F
545-785-8030	BKM, WM, GG	17x8.5	30	5x100	75	F
545-785-6530	BKM, WM, GG	17x8.5	30	5x114.3	75	F
545-790-8045	BKM, WM, GG	17x9	45	5x100	75	F
545-790-6545	BKM, WM, GG	17x9	45	5x114.3	75	F
545-790-8035	BKM, WM, GG	17x9	35	5x100	75	R
545-790-6535	BKM, WM, GG	17x9	35	5x114.3	75	R
545-790-8022	BKM, WM, GG	17x9	22	5x100	75	R
545-790-6522	BKM, WM, GG	17x9	22	5x114.3	75	R
545-795-6522	BKM, WM, GG	17x9.5	22	5x114.3	75	R
545-795-6515	BKM, WM, GG	17x9.5	15	5x114.3	75	R
545-795-6500	BKM, WM, GG	17x9.5	0	5x114.3	75	R
545-875-8048	BKM, WM, GG	18x7.5	48	5x100	75	F
545-875-4448	BKM, WM, GG	18x7.5	48	5x112	75	F
545-875-6548	BKM, WM, GG	18x7.5	48	5x114.3	75	F
545-880-4450	BKM, WM, GG	18x8	50	5x112	75	F
545-880-8045	BKM, WM, GG	18x8	45	5x100	75	F
545-880-6545	BKM, WM, GG	18x8	45	5x114.3	75	F
545-885-8048	BKM, WM, GG	18x8.5	48	5x100	75	F
545-885-6548	BKM, WM, GG	18x8.5	48	5x114.3	75	F
545-885-6534	BKM, WM, GG	18x8.5	34	5x114.3	75	F
545-885-8045	BKM, WM, GG	18x8.5	45	5x100	75	M
545-885-6545	BKM, WM, GG	18x8.5	45	5x114.3	75	M
545-885-6535	BKM, WM, GG	18x8.5	35	5x114.3	75	M
545-885-1235	BKM, WM, GG	18x8.5	35	5x120	72.5	M

PART NO.	FINISH	SIZE	INSET	PATTERN	BORE	FACE
545-890-8042	BKM, WM, GG	18x9	42	5x100	75	M
545-890-6542	BKM, WM, GG	18x9	42	5x114.3	75	M
545-890-1242	BKM, WM, GG	18x9	42	5x120	72.5	M
545-890-6538	BKM, WM, GG	18x9	38	5x114.3	75	M
545-890-6528	BKM, WM, GG	18x9	28	5x114.3	75	M
545-890-1228	BKM, WM, GG	18x9	28	5x120	72.5	M
545-895-8040	BKM, WM, GG	18x9.5	40	5x100	75	M
545-895-6540	BKM, WM, GG	18x9.5	40	5x114.3	75	M
545-895-6527	BKM, WM, GG	18x9.5	27	5x114.3	75	R
545-895-6520	BKM, WM, GG	18x9.5	20	5x114.3	75	R
545-810-6540	BKM, WM, GG	18x10	40	5x114.3	75	R
545-810-6538	BKM, WM, GG	18x10	38	5x114.3	75	R
545-810-6525	BKM, WM, GG	18x10	25	5x114.3	75	R
545-810-1225	BKM, WM, GG	18x10	25	5x120	72.5	R
545-8105-6545	BKM, WM, GG	18x10.5	45	5x114.3	75	M
545-811-6515	BKM, WM, GG	18x11	15	5x114.3	75	R
545-980-8045	BKM, WM, GG	19x8	45	5x100	75	F
545-980-4445	BKM, WM, GG	19x8	45	5x112	75	F
545-980-6545	BKM, WM, GG	19x8	45	5x114.3	75	F
545-985-4442	BKM, WM, GG	19x8.5	42	5x112	75	F
545-985-6542	BKM, WM, GG	19x8.5	42	5x114.3	75	F
545-985-6532	BKM, WM, GG	19x8.5	32	5x114.3	75	F
545-985-1232	BKM, WM, GG	19x8.5	32	5x120	72.5	F
545-990-4440	BKM, WM, GG	19x9	40	5x112	75	F
545-990-6540	BKM, WM, GG	19x9	40	5x114.3	75	F
545-990-4427	BKM, WM, GG	19x9	27	5x112	75	R
545-995-1245	BKM, WM, GG	19x9.5	45	5x120	72.5	R
545-995-6545	BKM, WM, GG	19x9.5	45	5x114.3	75	R
545-910-4438	BKM, WM, GG	19x10	38	5x112	75	R
545-910-6520	BKM, WM, GG	19x10	20	5x114.3	75	R

Replacement decal: A545-DECAL



RPF1RS

18 - Racing Series



F1 Silver (SP)



Dark Gunmetal (GM)

The RPF1RS is everything you love about the RPF1 with the addition of a deep face creating a large lip. The RPF1RS is made in Japan and has been in the works for years. We at Enkei wanted to make sure we created a “big lip” RPF1 that lived up to the strong structural quality you expect from us. It is available in low insets and even a negative inset for the 11” wide version.

The twin spokes on the Enkei RPF1RS achieve better stress dispersion on curves, hard braking, and extreme race driving.

CENTER DESIGN: Enkei’s pocket design around the bolt circles increases rigidity and keeps the wheel cooler during aggressive race driving.

MAT PROCESS: Shaping by the MAT process reduces wheel weight by 10%-15%. Every pound of unsprung weight savings has the effect of reducing overall vehicle weight by 20lbs.

Sizes 18×9.5, 18×10, 18×10.5, and 18×11
Available in Silver or Matte Dark Gunmetal
Spec-E Inspected
MAT Technology

PART NO.	FINISH	SIZE	INSET	PATTERN	BORE	EST. WEIGHT	FACE
379-895-6512	SP, GM	18x9.5	12	5x114.3	75	18.96	R
379-810-6506	SP, GM	18x10	6	5x114.3	75	19.18	R
379-8105-6510	SP, GM	18x10.5	10	5x114.3	75	19.40	R
379-8105-6500	SP, GM	18x10.5	0	5x114.3	75	19.40	R
379-811-65N10	SP, GM	18x11	-10	5x114.3	75	20.72	R





F1 Silver (SP)



Black (BK) (Limited Sizes)



SBC (Limited Sizes)



Gold (GG) (Limited Sizes)



CAP NOT INCLUDED
Optional cap for 15x8,
16, 17, and 18 inch RPF1
(A379-0000SP)

RPF1

Now available
in 15X8!

14 | 15 | 16 | 17 | 18 - Racing Series

PART NO.	FINISH	SIZE	INSET	PATTERN	BORE	EST. WEIGHT	FACE
3794704928	SP	14x7	28	4x100	54	8.40	R
3794704919	SP	14x7	19	4x100	54	8.70	R
3795704935	SP	15x7	35	4x100	73	9.85	F
3795704941	SP	15x7	41	4x100	73	9.65	F
3795804928	SP	15x8	28	4x100	75	11.35	R
3796704843	SP	16x7	43	4x114.3	73	N.A	F
3796704935	SP	16x7	35	4x100	73	13.70	F
3796704943	SP	16x7	43	4x100	73	N.A	F
3796706530	SP	16x7	30	5x114.3	73	14.30	F
3796706535	SP	16x7	35	5x114.3	73	N.A	F
3796706543	SP	16x7	43	5x114.3	73	13.70	F
3796708035	SP	16x7	35	5x100	73	N.A	F
3796804938	SP	16x8	38	4x100	73	N.A	F
3796806538	SP	16x8	38	5x114.3	73	N.A	F
3797704935	SP	17x7	35	4x100	73	N.A	F
3797704943	SP	17x7	43	4x100	73	15.15	F
3797706545	SP	17x7	45	5x114.3	73	14.90	F
3797754448	SP	17x7.5	48	5x112	73	15.25	F
3797756548	SP	17x7.5	48	5x114.3	73	15.25	F
3797758048	SP	17x7.5	48	5x100	73	15.25	F
3797806535	SP	17x8	35	5x114.3	73	16.10	F
3797806545	GG	17x8	45	5x114.3	73	16.05	F
3797806545	SP	17x8	45	5x114.3	73	16.05	F
3797808035	SP	17x8	35	5x100	73	16.10	F
3797808045	GG	17x8	45	5x100	73	16.05	F
3797808045	SP	17x8	45	5x100	73	16.05	F
3797856530	SP	17x8.5	30	5x114.3	73	17.05	F
3797856540	SP	17x8.5	40	5x114.3	73	16.30	F
3797906522	SP	17x9	22	5x114.3	73	16.35	R
3797906535	SP	17x9	35	5x114.3	73	N.A	R
3797906545	SP	17x9	45	5x114.3	73	15.65	R
3797906545	GG	17x9	45	5x114.3	73	15.65	R
3797908045	SP	17x9	45	5x100	73	15.65	R
3797908045	GG	17x9	45	5x100	73	15.65	R
3797956518	SP	17x9.5	18	5x114.3	73	16.75	R
3797956538	SP	17x9.5	38	5x114.3	73	16.25	R
3797106518	SP	17x10	18	5x114.3	73	17.25	R
3797106538	SP	17x10	38	5x114.3	73	16.90	R
3798754448	SP	18x7.5	48	5x112	73	16.90	F
3798756548	SP	18x7.5	48	5x114.3	73	16.90	F
3798758048	SP	18x7.5	48	5x100	73	16.90	F
3798804435	SP	18x8	35	5x112	73	18.00	F
3798806535	SP	18x8	35	5x114.3	73	18.00	F
3798808035	SP	18x8	35	5x100	56	18.00	F
3798808045	GG	18x8	45	5x100	56	17.95	F
3798808045	SP	18x8	45	5x100	56	17.95	F
3798851240	SP	18x8.5	40	5x120	72.5	18.85	F
3798856530	SP	18x8.5	30	5x114.3	73	18.95	F
3798856540	SP	18x8.5	40	5x114.3	73	N.A	F
3798856540	GG	18x8.5	40	5x114.3	73	N.A	F
3798904435	SP	18x9	35	5x112	66.5	N.A	R
3798906535	SP	18x9	35	5x114.3	73	17.10	R
3798956515	SP	18x9.5	15	5x114.3	73	18.20	R
3798956538	SP	18x9.5	38	5x114.3	73	N.A	R
3798956545	SP	18x9.5	45	5x114.3	73	17.40	R
3798106538	SP	18x10	38	5x114.3	73	18.45	R
37981056515	SP	18x10.5	15	5x114.3	73	19.05	R



F1 Racing-Grade

SPEC-E

PF09

16, 17, 18 - Racing Series



Matte Gunmetal (GM)



Matte Gunmetal / front angle (GM)



Dark Silver (DS)

The PF09 is the latest addition to Enkei's Racing Series lineup. Featuring 9 smartly contoured spokes designed to curve around big brakes found on modern sports cars, the PF09 is an excellent choice for track day enthusiasts and weekend autocrossers alike. The PF09 is available in sizes ranging from 16x7 to 18x10.5 and is available in Enkei's Dark Silver or Matte Gunmetal Finish. All PF09s feature Enkei's signature flat center cap.

PART NO.	FINISH	SIZE	INSET	PATTERN	BORE	EST. WEIGHT
540-670-4945	DS, GM	16x7	45	4x100	67	14.88
540-670-8048	DS, GM	16x7	48	5x100	67	14.88
540-770-4445	DS, GM	17x7	45	5x112	75	17.42
540-770-4938	DS, GM	17x7	38	4x100	75	17.42
540-770-4945	DS, GM	17x7	45	4x100	75	17.42
540-770-6545	DS, GM	17x7	45	5x114.3	75	17.42
540-770-8045	DS, GM	17x7	45	5x100	75	17.42
540-775-4445	DS, GM	17x7.5	45	5x112	75	17.86
540-775-6545	DS, GM	17x7.5	45	5x114.3	75	17.86
540-775-8045	DS, GM	17x7.5	45	5x100	75	17.86
540-780-4425	DS, GM	17x8	25	5x112	75	18.74
540-780-6533	DS, GM	17x8	33	5x114.3	75	18.74
540-780-6535	DS, GM	17x8	35	5x114.3	75	18.74
540-780-8040	DS, GM	17x8	40	5x100	75	18.74
540-790-6525	DS, GM	17x9	25	5x114.3	75	19.51
540-790-6535	DS, GM	17x9	35	5x114.3	75	19.51
540-790-6545	DS, GM	17x9	45	5x114.3	75	19.51
540-790-8045	DS, GM	17x9	45	5x100	75	19.51
540-875-4448	DS, GM	18x7.5	48	5x112	75	19.2
540-875-6548	DS, GM	18x7.5	48	5x114.3	75	19.2
540-875-8048	DS, GM	18x7.5	48	5x100	75	19.2
540-880-1235	DS, GM	18x8	35	5x120	75	20.17
540-880-4425	DS, GM	18x8	25	5x112	75	20.17
540-880-4435	DS, GM	18x8	35	5x112	75	20.17
540-880-4450	DS, GM	18x8	50	5x112	75	20.17
540-880-6545	DS, GM	18x8	45	5x114.3	75	20.17
540-880-8045	DS, GM	18x8	45	5x100	75	20.17
540-885-1245	DS, GM	18x8.5	45	5x120	75	20.72
540-885-4438	DS, GM	18x8.5	38	5x112	75	20.72
540-885-4445	DS, GM	18x8.5	45	5x112	75	20.72
540-885-6538	DS, GM	18x8.5	38	5x114.3	75	20.72
540-885-6545	DS, GM	18x8.5	45	5x114.3	75	20.72
540-885-8045	DS, GM	18x8.5	45	5x100	75	20.72
540-890-4425	DS, GM	18x9	25	5x112	75	20.83
540-890-4442	DS, GM	18x9	42	5x112	75	20.83
540-890-6530	DS, GM	18x9	30	5x114.3	75	20.83
540-890-6542	DS, GM	18x9	42	5x114.3	75	20.83
540-890-8042	DS, GM	18x9	42	5x100	75	20.83
540-895-4440	DS, GM	18x9.5	40	5x112	75	27.27
540-895-6515	DS, GM	18x9.5	15	5x114.3	75	27.27
540-895-6527	DS, GM	18x9.5	27	5x114.3	75	27.27
540-895-6540	DS, GM	18x9.5	40	5x114.3	75	27.27
540-8105-6515	DS, GM	18x10.5	15	5x114.3	75	20.71
540-8108-6538	DS, GM	18x10.5	38	5x114.3	75	20.71

Cap# A489-CAPBK, Valve Stem # A460-VLVE-BK

GTC02

18, 19 - Racing Series



Hyper Silver (HS)



Matte Black (BK)

Visit Enkei.com for cap part numbers
 Each GTC02 includes two Racing Prototype stickers
 Valve Stem# V429-0000SP for Hyper Silver,
 V429-0000BK for Black

PART NO.	FINISH	SIZE	INSET	PATTERN	BORE	EST. WEIGHT	FACE
534-880-4445	HS, BK	18x8	45	5x112	66.5	19.18	F
534-880-6535	HS, BK	18x8	35	5x114.3	75	19.18	F
534-880-6545	HS, BK	18x8	45	5x114.3	75	19.18	F
534-880-8035	HS, BK	18x8	35	5x100	75	19.18	F
534-880-8045	HS, BK	18x8	45	5x100	75	19.18	F
534-885-1235	HS, BK	18x8.5	35	5x120	72.5	20.26	F
534-885-4443	HS, BK	18x8.5	43	5x112	66.5	20.26	F
534-885-6535	HS, BK	18x8.5	35	5x114.3	75	20.26	F
534-885-6543	HS, BK	18x8.5	43	5x114.3	75	20.26	F
534-885-8035	HS, BK	18x8.5	35	5x100	75	20.26	F
534-890-4425	HS, BK	18x9	25	5x112	66.5	20.39	M
534-890-4442	HS, BK	18x9	42	5x112	66.5	20.39	M
534-890-6530	HS, BK	18x9	30	5x114.3	75	20.39	M
534-890-6542	HS, BK	18x9	42	5x114.3	75	20.39	M
534-890-8042	HS, BK	18x9	42	5x100	75	20.39	M
534-895-1245	HS, BK	18x9.5	45	5x120	72.5	20.79	M
534-895-4445	HS, BK	18x9.5	45	5x112	66.5	20.79	M
534-895-6500	HS, BK	18x9.5	0	5x114.3	75	20.79	R
534-895-6515	HS, BK	18x9.5	15	5x114.3	75	20.41	R
534-895-6540	HS, BK	18x9.5	40	5x114.3	75	20.79	M
534-810-4432	HS, BK	18x10	32	5x112	66.5	20.5	R
534-810-4435	HS, BK	18x10	35	5x112	66.5	20.5	M
534-810-4445	HS, BK	18x10	45	5x112	66.5	21.12	M
534-810-6525	HS, BK	18x10	25	5x114.3	75	21.12	R
534-810-6545	HS, BK	18x10	45	5x114.3	75	21.12	M
534-8105-4435	HS, BK	18x10.5	35	5x112	66.5	21.54	R
534-8105-4445	HS, BK	18x10.5	45	5x112	66.5	21.54	M
534-8105-6515	HS, BK	18x10.5	15	5x114.3	75	21.54	R
534-8105-6522	HS, BK	18x10.5	22	5x114.3	75	21.54	R
534-8105-6535	HS, BK	18x10.5	35	5x114.3	75	20.92	R
534-8105-6545	HS, BK	18x10.5	45	5x114.3	75	21.54	M
534-980-6545	HS, BK	19x8	45	5x114.3	75	N/A	F
534-980-8045	HS, BK	19x8	45	5x100	75	N/A	F
534-985-1227	HS, BK	19x8.5	27	5x120	72.5	N/A	M
534-985-1235	HS, BK	19x8.5	35	5x120	72.5	N/A	F
534-985-1242	HS, BK	19x8.5	42	5x120	72.5	N/A	F
534-985-4427	HS, BK	19x8.5	27	5x112	66.5	N/A	M
534-985-4445	HS, BK	19x8.5	45	5x112	66.5	N/A	F
534-985-6527	HS, BK	19x8.5	27	5x114.3	75	N/A	M
534-985-6535	HS, BK	19x8.5	35	5x114.3	75	N/A	F
534-990-1230	HS, BK	19x9	30	5x120	72.5	N/A	M
534-990-1245	HS, BK	19x9	45	5x120	72.5	N/A	F
534-990-4440	HS, BK	19x9	40	5x112	66.5	N/A	M
534-990-4445	HS, BK	19x9	45	5x112	66.5	N/A	F
534-990-6530	HS, BK	19x9	30	5x114.3	75	N/A	M
534-990-6540	HS, BK	19x9	40	5x114.3	75	N/A	M
534-990-6545	HS, BK	19x9	45	5x114.3	75	N/A	F
534-995-1227	HS, BK	19x9.5	27	5x120	72.5	N/A	M
534-995-1245	HS, BK	19x9.5	45	5x120	72.5	N/A	M
534-995-4427	HS, BK	19x9.5	27	5x112	66.5	N/A	M
534-995-4440	HS, BK	19x9.5	40	5x112	66.5	N/A	R
534-995-4445	HS, BK	19x9.5	45	5x112	66.5	N/A	M
534-995-6545	HS, BK	19x9.5	45	5x114.3	75	N/A	M
534-910-1240	HS, BK	19x10	40	5x120	72.5	N/A	R
534-910-4440	HS, BK	19x10	40	5x112	66.5	N/A	R
534-910-6520	HS, BK	19x10	20	5x114.3	75	N/A	R
534-910-6540	HS, BK	19x10	40	5x114.3	75	N/A	R
534-9105-1234	HS, BK	19x10.5	34	5x120	72.5	N/A	R
534-9105-4434	HS, BK	19x10.5	34	5x112	66.5	N/A	R
534-9105-6515	HS, BK	19x10.5	15	5x114.3	75	N/A	R



SPEC-E

F1 Racing-Grade



17x9 w/cap Matte Dark Gunmetal (GM)



Matte Dark Gunmetal (GM)

RPT1

16, 17, 18 - Racing Series

Truck
Application

The Enkei RPT1 was first introduced to the world in 2002 and it was an instant hit thanks to its high strength, low weight, and no-nonsense design. Truck and SUV owners have often asked for Enkei to develop an RPT1 for them and we listened. The all-new Enkei RPT1 features the same clean split spoke design as the RPF1, but is built to higher loading capacities to suit 6-lug trucks and SUVs. Available in 16", 17" and 18" applications and a variety of colors, the RPT1 is one of the lightest weight and toughest truck wheels on the market today.

PART NO.	FINISH	SIZE	INSET	PATTERN	BORE	EST. WEIGHT	CAP
528-680-8400	GM	16x8	0	6x139.7	106.1		Included
528-790-8400	GM	17x9	0	6x139.7	106.1	24.00	Included
528-790-9512	GM	17x9	12	6x135 (Raptor)	87.1		Included
528-890-8400	GM	18x9	0	6x139.7	106.1		Included

Cap# A528-CAPBK

PART NO.	FINISH	SIZE	INSET	PATTERN	BORE	CAP
520-680-8400	GM	16x8	0	6x139.7	108.5	No Cap Available
520-890-8400	GM	18x9	0	6x139.7	108.5	No Cap Available

No cap available for style 520 RPT1

Valve Stem # V429-0000BK



PF05

16, 17, 18, 19 - Racing Series



Dark Silver (DS)



Gold
(Special Order)



Matte Gunmetal
(Special Order)

PART NO.	FINISH	SIZE	INSET	PATTERN	BORE	EST. WEIGHT	FACE
527-670-4945	DS	16x7	45	4x100	67	15.45	F
527-670-8048	DS	16x7	48	5x100	67	N.A	F
527-770-4945	DS	17x7	45	4x100	75	17.95	F
527-770-6545	DS	17x7	45	5x114.3	75	N.A	F
527-775-4448	DS	17x7.5	48	5x112	75	N.A	F
527-775-8045	DS	17x7.5	45	5x100	75	18.41	F
527-780-6535	DS	17x8	35	5x114.3	75	N.A	F
527-780-8038	DS	17x8	38	5x100	75	19.86	F
527-785-6538	DS	17x8.5	38	5x114.3	75	19.75	F
527-785-6548	DS	17x8.5	48	5x114.3	75	N.A	F
527-785-8048	DS	17x8.5	48	5x100	75	N.A	F
527-790-6520	DS	17x9	20	5x114.3	75	19.64	R
527-790-6540	DS	17x9	40	5x114.3	75	N.A	R
527-790-8040	DS	17x9	40	5x100	75	N.A	R
527-795-6512	DS	17x9.5	12	5x114.3	75	20.59	R
527-795-6535	DS	17x9.5	35	5x114.3	75	N.A	R
527-875-6548	DS	18x7.5	48	5x114.3	75	N.A	F
527-875-8048	DS	18x7.5	48	5x100	75	19.69	F
527-880-4435	DS	18x8	35	5x112	75	20.26	F
527-880-4450	DS	18x8	50	5x112	75	N.A	F
527-880-6545	DS	18x8	45	5x114.3	75	20.44	F
527-880-8045	DS	18x8	45	5x100	75	20.44	F
527-885-6538	DS	18x8.5	38	5x114.3	75	N.A	F
527-885-6545	DS	18x8.5	45	5x114.3	75	N.A	F
527-885-8045	DS	18x8.5	45	5x100	75	21.83	F
527-890-6528	DS	18x9	28	5x114.3	75	N.A	R
527-890-6538	DS	18x9	38	5x114.3	75	21.23	F
527-890-6545	DS	18x9	45	5x114.3	75	N.A	F
527-890-8040	DS	18x9	40	5x100	75	N.A	F
527-895-6500	DS	18x9.5	0	5x114.3	75	22.05	R
527-895-6515	DS	18x9.5	15	5x114.3	75	N.A	R
527-895-6525	DS	18x9.5	25	5x114.3	75	22.31	R
527-895-6538	DS	18x9.5	38	5x114.3	75	N.A	R
527-810-6512	DS	18x10	12	5x114.3	75	22.91	R
527-810-6525	DS	18x10	25	5x114.3	75	N.A	R
527-8105-6515	DS	18x10.5	15	5x114.3	75	24.27	R
527-8105-6523	DS	18x10.5	23	5x114.3	75	N.A	R
527-980-6545	DS	19x8	45	5x114.3	75	N.A	F
527-980-8045	DS	19x8	45	5x100	75	22.93	F
527-985-4438	DS	19x8.5	38	5x112	75	23.79	F
527-985-6538	DS	19x8.5	38	5x114.3	75	23.79	F
527-990-6525	DS	19x9	25	5x114.3	75	24.34	R
527-995-6522	DS	19x9.5	22	5x114.3	75	23.30	R
527-995-6545	DS	19x9.5	45	5x114.3	75	N.A	R
527-910-6520	DS	19x10	20	5x114.3	75	N.A	R
527-910-6528	DS	19x10	28	5x114.3	75	25.07	R
527-9110-6510	DS	19x11	10	5x114.3	75	26.98	R

Racing Revolution

GTC01RR

18 - Racing Series



Matte Gunmetal (GM)



Titanium Gold
(Limited Sizes / Special Order)



SPEC-E

The GTC01RR is made after one of our strongest wheels, the GTC01. After vast research, we were able to keep the high rigidity while making it light weight, comparable to the RPF1. The GTC01RR has been tested in high performance categories including cornering, braking, acceleration, deceleration, and steering response. Available in 3 different concave faces.

PART NO.	FINISH	SIZE	INSET	PATTERN	BORE	EST. WEIGHT	FACE
504-885-1235	GM	18x8.5	35	5x120	72.5	N.A.	F
504-885-4435	GM	18x8.5	35	5x112	66.5	N.A.	F
504-885-4445	GM	18x8.5	45	5x112	66.5	19.42	F
504-885-4535	GM	18x8.5	35	5x112	66.5	N.A.	F
504-885-4545	GM	18x8.5	45	5x112	66.5	N.A.	F
504-885-4635	GM	18x8.5	35	5x112	66.5	N.A.	F
504-885-6542	GM	18x8.5	42	5x114.3	75	N.A.	F
504-885-8042	GM	18x8.5	42	5x100	75	N.A.	F
504-890-1250	GM	18x9	50	5x120	72.5	19.51	F
504-890-6525	GM	18x9	25	5x114.3	75	N.A.	F
504-890-6535	GM	18x9	35	5x114.3	75	N.A.	F
504-890-6540	GM	18x9	40	5x114.3	75	N.A.	F
504-890-8040	GM	18x9	40	5x100	75	N.A.	F
504-895-1222	GM	18x9.5	22	5x120	72.5	N.A.	M
504-895-1235	GM	18x9.5	35	5x120	72.5	N.A.	M
504-895-4445	GM	18x9.5	45	5x112	66.5	20.37	M
504-895-4545	GM	18x9.5	45	5x112	66.5	20.37	M
504-895-4645	GM	18x9.5	45	5x112	66.5	20.37	M
504-895-6522	GM	18x9.5	22	5x114.3	75	N.A.	M
504-895-6535	GM	18x9.5	35	5x114.3	75	N.A.	M
504-895-6545	GM	18x9.5	45	5x114.3	75	N.A.	M
504-895-8035	GM	18x9.5	35	5x100	75	N.A.	M
504-810-6522	GM	18x10	22	5x114.3	75	21.05	R
504-810-6530	GM	18x10	30	5x114.3	75	21.36	M
504-8105-1223	GM	18x10.5	23	5x120	72.5	N.A.	R
504-8105-6515	GM	18x10.5	15	5x114.3	75	N.A.	R
504-8105-6522	GM	18x10.5	22	5x114.3	75	22.57	M
504-8105-6525	GM	18x10.5	25	5x114.3	75	N.A.	R
504-8105-6535	GM	18x10.5	35	5x114.3	75	21.27	R
504-8110-1230	GM	18x11	30	5x120	72.5	22.11	R
504-8110-6516	GM	18x11	16	5x114.3	75	N.A.	R

Valve Stem # A429-000BK



Racing Revolution



Matte Gunmetal (GM)



Hyper Silver
(Limited Sizes / Special Order)

Another Enkei Racing legend has received an RR makeover with Enkei's latest MAT DURA II flow forming rim, the NT03RR. The wheel's iconic brace ring evenly distributes stresses on spokes to help rim rigidity even further, giving NT03RR superb cornering and steering response capabilities. Dynamic design with concave rear face offers a beautiful, yet powerful form to complete any true racing setup. The NT03RR is offered in sizes ranging from 17x7 all the way up to 18x11 with a variety of bolt patterns and concaveness profiles. Available in three different concave faces.

NT03RR

17, 18 - Racing Series

PART NO.	FINISH	SIZE	INSET	PATTERN	BORE	EST. WEIGHT	FACE
512-770-6548	GM	17x7	48	5x114.3	75	16.97	F
512-770-8040	GM	17x7	40	5x100	75	N.A.	F
512-775-6535	GM	17x7.5	35	5x114.3	75	N.A.	F
512-775-6550	GM	17x7.5	50	5x114.3	75	17.48	F
512-775-8040	GM	17x7.5	40	5x100	75	N.A.	F
512-780-1245	GM	17x8	45	5x120	72.5	N.A.	F
512-780-4445	GM	17x8	45	5x112	66.5	N.A.	F
512-780-6535	GM	17x8	35	5x114.3	75	N.A.	F
512-780-6548	GM	17x8	48	5x114.3	75	17.68	F
512-780-8048	GM	17x8	48	5x100	75	N.A.	F
512-790-1250	GM	17x9	50	5x120	72.5	18.63	R
512-790-4450	GM	17x9	50	5x112	66.5	N.A.	R
512-790-6512	GM	17x9	12	5x114.3	75	N.A.	R
512-790-6535	GM	17x9	35	5x114.3	75	N.A.	R
512-790-6545	GM	17x9	45	5x114.3	75	N.A.	R
512-790-6563	GM	17x9	63	5x114.3	75	18.99	F
512-790-8040	GM	17x9	40	5x100	75	N.A.	R
512-790-8052	GM	17x9	52	5x100	75	N.A.	F
512-880-1234	GM	18x8	34	5x120	72.5	N.A.	F
512-880-4445	GM	18x8	45	5x112	66.5	N.A.	F
512-880-6545	GM	18x8	45	5x114.3	75	19.40	F
512-880-8045	GM	18x8	45	5x100	75	N.A.	F
512-885-1230	GM	18x8.5	30	5x120	72.5	N.A.	F
512-885-1247	GM	18x8.5	47	5x120	72.5	19.84	F
512-885-4445	GM	18x8.5	45	5x112	66.5	N.A.	F
512-885-6535	GM	18x8.5	35	5x114.3	75	N.A.	F
512-885-6542	GM	18x8.5	42	5x114.3	75	N.A.	F
512-885-8042	GM	18x8.5	42	5x100	75	N.A.	F
512-890-1245	GM	18x9	45	5x120	72.5	19.99	M
512-890-4445	GM	18x9	45	5x112	66.5	N.A.	M
512-890-6527	GM	18x9	27	5x114.3	75	N.A.	M
512-890-6540	GM	18x9	40	5x114.3	75	N.A.	M
512-890-6545	GM	18x9	45	5x114.3	75	N.A.	M
512-890-8040	GM	18x9	40	5x100	75	N.A.	M
512-895-1222	GM	18x9.5	22	5x120	72.5	N.A.	M
512-895-1245	GM	18x9.5	45	5x120	72.5	20.41	M
512-895-4445	GM	18x9.5	45	5x112	66.5	N.A.	M
512-895-6515	GM	18x9.5	15	5x114.3	75	21.03	R
512-895-6527	GM	18x9.5	27	5x114.3	75	N.A.	M
512-895-6540	GM	18x9.5	40	5x114.3	75	N.A.	M
512-895-8046	GM	18x9.5	46	5x100	75	N.A.	M
512-810-6522	GM	18x10	22	5x114.3	75	N.A.	R
512-810-6538	GM	18x10	38	5x114.3	75	20.15	R
512-8105-1223	GM	18x10.5	23	5x120	72.5	N.A.	R
512-8105-6515	GM	18x10.5	15	5x114.3	75	N.A.	R
512-8105-6525	GM	18x10.5	25	5x114.3	75	21.51	R
512-8110-6515	GM	18x11	15	5x114.3	75	22.28	R

Cap# A429-0000BK for Gunmetal finish, V429-0000SP for Silver finish



SPEC-E

Racing Revolution

RS05RR

New Supra
Fitment Available

18 - Racing Series

Designed to look incredible while retaining Enkei's racing spirit & functionality. The light weight RS05RR is made using Enkei's MAT-DURA flow forming method. With the RS05RR, there's no need to choose between form or function, you can simply have both. Made in 18x8.5-18x11 with 3 different concave face designs. Available in a Matte Gunmetal finish.



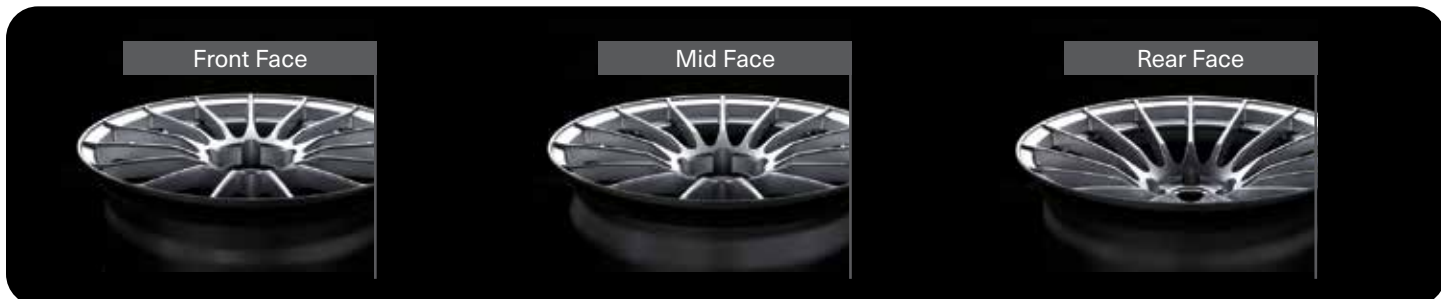
Matte Gunmetal (GM)



SPEC-E

PART NO.	FINISH	SIZE	INSET	PATTERN	BORE	EST. WEIGHT	FACE
484-885-1235	GM	18x8.5	35	5X120	72.5	N.A.	F
484-885-4435	GM	18x8.5	35	5X112	66.5	N.A.	F
484-885-4445	GM	18x8.5	45	5X112	66.5	18.07	F
484-885-4535	GM	18x8.5	35	5X112	66.5	N.A.	F
484-885-4545	GM	18x8.5	45	5X112	66.5	18.07	F
484-885-4635	GM	18x8.5	35	5X112	66.5	N.A.	F
484-885-8042	GM	18x8.5	42	5X100	75	N.A.	F
484-885-8050	GM	18x8.5	50	5X100	75	18.12	F
484-890-1250	GM	18x9	50	5X120	72.5	18.82	F
484-890-6525	GM	18x9	25	5X114.3	75	N.A.	F
484-890-6535	GM	18x9	35	5X114.3	75	N.A.	F
484-890-6540	GM	18x9	40	5X114.3	75	N.A.	F
484-890-8040	GM	18x9	40	5x100	75	N.A.	F
484-895-1222	GM	18x9.5	22	5X120	72.5	N.A.	M
484-895-1235	GM	18x9.5	35	5X120	72.5	N.A.	M
484-895-4445	GM	18x9.5	45	5X112	66.5	19.29	M
484-895-4545	GM	18x9.5	45	5X112	66.5	19.29	M
484-895-4645	GM	18x9.5	45	5X112	66.5	19.29	M
484-895-6522	GM	18x9.5	22	5x114.3	75	N.A.	M
484-895-6535	GM	18x9.5	35	5x114.3	75	N.A.	M
484-895-8043	GM	18x9.5	43	5x100	75	N.A.	M
484-810-6522	GM	18x10	22	5x114.3	75	19.81	R
484-810-6530	GM	18x10	30	5x114.3	75	20.43	M
484-8105-1223	GM	18x10.5	23	5x120	72.5	N.A.	R
484-8105-6515	GM	18x10.5	15	5x114.3	75	N.A.	R
484-8105-6522	GM	18x10.5	22	5x114.3	75	21.25	M
484-8105-6525	GM	18x10.5	25	5x114.3	75	N.A.	R
484-8105-6535	GM	18x10.5	35	5x114.3	75	19.7	R
484-8110-1230	GM	18x11	30	5X120	72.5	20.54	R
484-8110-6516	GM	18x11	16	5x114.3	75	N.A.	R

Valve# V429-000BK (Black), Visit Enkei.com for cap part numbers.



PF07

17 | 18 | 19 - Racing Series

PART NO.	FINISH	SIZE	INSET	PATTERN	BORE	EST. WEIGHT	FACE
490-775-4450	DS	17x7.5	50	5x112	75	19.20	F
490-775-4942	DS	17x7.5	42	4x100	75	N.A.	F
490-775-6545	DS	17x7.5	45	5x114.3	75	N.A.	F
490-775-8045	DS	17x7.5	45	5x100	75	N.A.	F
490-780-6535	DS	17x8	35	5x114.3	75	N.A.	F
490-780-6548	DS	17x8	48	5x114.3	75	19.75	F
490-780-8038	DS	17x8	38	5x100	75	N.A.	F
490-785-6535	DS	17x8.5	35	5x114.3	75	N.A.	R
490-785-6555	DS	17x8.5	55	5x114.3	75	19.99	F
490-790-6520	DS	17x9	20	5x114.3	75	N.A.	R
490-790-6538	DS	17x9	38	5x114.3	75	N.A.	R
490-790-8038	DS	17x9	38	5x100	75	19.81	R
490-795-6518	DS	17x9.5	18	5x114.3	75	N.A.	R
490-795-6530	DS	17x9.5	30	5x114.3	75	N.A.	R
490-795-6540	DS	17x9.5	40	5x114.3	75	20.21	R
490-875-6548	DS	18x7.5	48	5x114.3	75	N.A.	F
490-875-8048	DS	18x7.5	48	5x100	75	20.94	F
490-880-4435	DS	18x8	35	5x112	75	N.A.	F
490-880-4450	DS	18x8	50	5x112	75	N.A.	F
490-880-6535	DS	18x8	35	5x114.3	75	N.A.	F
490-880-6545	DS	18x8	45	5x114.3	75	18.56	F
490-880-8045	DS	18x8	45	5x100	75	N.A.	F
490-885-6535	DS	18x8.5	35	5x114.3	75	N.A.	R
490-885-6545	DS	18x8.5	45	5x114.3	75	21.64	F
490-890-6530	DS	18x9	30	5x114.3	75	N.A.	R
490-890-6540	DS	18x9	40	5x114.3	75	20.92	R
490-890-8040	DS	18x9	40	5x100	75	N.A.	R
490-895-6515	DS	18x9.5	15	5x114.3	75	N.A.	R
490-895-6525	DS	18x9.5	25	5x114.3	75	N.A.	R
490-895-6540	DS	18x9.5	40	5x114.3	75	21.53	R
490-810-6538	DS	18x10	38	5x114.3	75	22.24	R
490-8105-6515	DS	18x10.5	15	5x114.3	75	N.A.	R
490-8105-6525	DS	18x10.5	25	5x114.3	75	23.52	R
490-980-4445	DS	19x8	45	5x112	75	N.A.	F
490-980-6545	DS	19x8	45	5x114.3	75	22.33	F
490-985-4438	DS	19x8.5	38	5x112	75	N.A.	F
490-985-6532	DS	19x8.5	32	5x114.3	75	N.A.	R
490-985-6542	DS	19x8.5	42	5x114.3	75	23.03	F
490-990-6527	DS	19x9	27	5x114.3	75	N.A.	R
490-990-6540	DS	19x9	40	5x114.3	75	23.08	R
490-995-6535	DS	19x9.5	35	5x114.3	75	N.A.	R
490-995-6545	DS	19x9.5	45	5x114.3	75	23.50	R
490-910-6518	DS	19x10	18	5x114.3	75	N.A.	R
490-910-6540	DS	19x10	40	5x114.3	75	24.29	R

Cap # A489-CAPBK, Valve Stem # A460-VLV-BK



Dark Silver (DS)



Seven dynamic spokes reach toward the edge of the flange in a concave fashion to give the wheel additional depth and the appearance of being one size larger. The sides of the spokes are thinned to make them lighter while emphasizing the concave shape. This is combined with a double-lipped flange for an especially aggressive look. The concepts of toughness and sport serve as inspiration for these design features. The wheel's rim is formed with MAT technology to achieve a high level of strength, rigidity, and light weight. The face is engineered to accommodate a large brake caliper and to enhance brake cooling performance during high speed driving.

PF01EVO

17 | 18 - Racing Series



SBK (SBK)



Pearl White (WP)



Matte Black (BK)

From time attack to drifting, the PF01EVO wheel is designed to maximize the performance of 17 and 18-inch tires, which are popular among these circuit racers fans. When mounted on a vehicle with over fenders, the minimum inset starts from 0 mm, widening the settable tread width range.

The PF01EVO wheel adopts ENKEI's proprietary MAT process technology to ensure both the high rigidity and lightness required for an uncompromising sport wheel.

ROULETTE PATTERN

Our unique roulette pattern is grooved on the rim to reduce the slippage ratio between tire and rim. The roulette-pattern maintains the best condition of the wheel and tire assembly, thus achieving the highest performance during extreme acceleration and deceleration.

17, 18

MATTE BLACK, PEARL WHITE, OR SBK

Spec-E Inspected

MAT Process

PART NO.	FINISH	SIZE	INSET	PATTERN	BORE	EST. WEIGHT	FACE
489-790-6500	BK, WP, SBK	17x9	0	5X114.3	75	19.00	R
489-790-6512	BK, WP, SBK	17x9	12	5X114.3	75	19.00	R
489-790-6522	BK, WP, SBK	17x9	22	5X114.3	75	19.00	R
489-795-6500	BK, WP, SBK	17x9.5	0	5X114.3	75	19.05	R
489-795-6512	BK, WP, SBK	17x9.5	12	5X114.3	75	19.05	R
489-795-6522	BK, WP, SBK	17x9.5	22	5X114.3	75	19.05	R
489-795-6535	BK, WP, SBK	17x9.5	35	5X114.3	75	19.05	R
489-890-6525	BK, WP, SBK	18x9	25	5X114.3	75	18.50	F
489-890-6535	BK, WP, SBK	18x9	35	5X114.3	75	18.50	F
489-890-6545	BK, WP, SBK	18x9	45	5X114.3	75	18.50	F
489-895-1215	BK, WP, SBK	18x9.5	15	5X120	72.5	19.10	R
489-895-1220	BK, WP, SBK	18x9.5	20	5X120	72.5	19.85	R
489-895-4445	BK, WP, SBK	18x9.5	45	5X112	75	19.85	R
489-895-6500	BK, WP, SBK	18x9.5	0	5X114.3	75	19.85	R
489-895-6512	BK, WP, SBK	18x9.5	12	5X114.3	75	19.10	R
489-895-6522	BK, WP, SBK	18x9.5	22	5X114.3	75	19.85	R
489-895-6535	BK, WP, SBK	18x9.5	35	5X114.3	75	19.85	F
489-895-6545	BK, WP, SBK	18x9.5	45	5X114.3	75	19.85	F
489-8105-1222	BK, WP, SBK	18x10.5	22	5X120	72.5	20.65	R
489-8105-6515	BK, WP, SBK	18x10.5	15	5X114.3	75	20.65	R
489-8105-6522	BK, WP, SBK	18x10.5	22	5x114.3	75	20.65	R

Cap # A489-CAPBK for Black and SBK, Cap # A489-CAPSP for Pearl White





PF01

15 | 16 | 17 | 18 - Racing Series

PART NO.	FINISH	SIZE	INSET	PATTERN	BORE	EST. WEIGHT
460-570-4935	SP	15x7	35	4x100	75	12.35
460-570-4941	SP	15x7	41	4x100	75	12.25
460-580-4935	SP	15x8	35	4x100	75	13.15
460-670-4943	SP	16x7	43	4x100	75	14.00
460-770-4938	SP	17x7	38	4x100	75	15.50
460-770-4945	SP	17x7	45	4x100	75	N.A.
460-770-6548	SP	17x7	48	5x114.3	75	15.90
460-775-6538	SP	17x7.5	38	5x114.3	75	17.15
460-775-6545	SP	17x7.5	45	5x114.3	75	16.75
460-775-8038	SP	17x7.5	38	5x100	75	17.15
460-775-8045	SP	17x7.5	45	5x100	75	16.75
460-780-4435	SP	17x8	35	5x112	75	18.20
460-780-4450	SP	17x8	50	5x112	75	16.95
460-780-6545	SP	17x8	45	5x114.3	75	N.A.
460-780-6550	SP	17x8	50	5x114.3	75	16.95
460-780-8035	SP	17x8	35	5x100	75	18.20
460-780-8050	SP	17x8	45	5x100	75	N.A.
460-785-1240	SP	17x8.5	40	5x120	75	18.35
460-785-6540	SP	17x8.5	40	5x114.3	75	18.35
460-875-6538	SP	18x7.5	38	5x114.3	75	17.50
460-875-6545	SP	18x7.5	45	5x114.3	75	17.65
460-875-8038	SP	18x7.5	38	5x100	75	17.50
460-875-8045	SP	18x7.5	45	5x100	75	17.65
460-880-1235	SP	18x8	35	5x120	75	19.20
460-880-1242	SP	18x8	42	5x120	75	N.A.
460-880-4435	SP	18x8	35	5x112	75	19.20
460-880-4445	SP	18x8	45	5x112	75	18.56
460-880-5140	SP	18x8	40	5x110	75	N.A.
460-880-6640	SP	18x8	40	5x114.3	75	N.A.
460-880-6645	SP	18x8	45	5x114.3	75	18.56
460-880-6650	SP	18x8	50	5x114.3	75	17.95
460-885-6630	SP	18x8.5	30	5x114.3	75	19.65
460-885-6635	SP	18x8.5	35	5x114.3	75	N.A.
460-885-6648	SP	18x8.5	48	5x114.3	75	18.30
460-885-8048	SP	18x8.5	48	5x100	75	N.A.
460-890-4435	SP	18x9	35	5x112	75	20.10
460-890-6635	SP	18x9	35	5x114.3	75	20.10
460-890-6645	SP	18x9	45	5x114.3	75	19.20
460-895-6615	SP	18x9.5	15	5x114.3	75	N.A.
460-895-6635	SP	18x9.5	35	5x114.3	75	20.65
460-895-6645	SP	18x9.5	45	5x114.3	75	20.35
460-895-8045	SP	18x9.5	45	5x100	75	N.A.
460-8105-6615	SP	18x10.5	15	5x114.3	75	23.15
460-8105-6638	SP	18x10.5	38	5x114.3	75	22.05



Silver (SP)

Matte Black (BK)
(Limited Sizes)

WIDE APPLICATION

Responding to popular demand, the PF01 offers a wide variety of applications ranging from 15x7 through 18x10.5. This wheel also has a large brake caliper clearance to meet car enthusiasts' needs.

ROULETTE PATTERN

Our unique roulette pattern is grooved on the rim to reduce the slippage ratio between tire and rim. The roulette-pattern maintains the best condition of the wheel and tire assembly, thus achieving the highest performance during extreme acceleration and deceleration. The roulette pattern is also used for McLaren Honda Formula One racing wheels.



Cap # A423-0000SP, Valve Stem# A460-VLV-SP for Silver finish wheel, Matte Black finish is for selected sizes and special order only, For 17x8 and 17x9 Matte Black finish, see Please see PF01SS Cap # A461-CAPCP, Valve Stem# A460-VLV-BK for Matte Black



F1 Silver (SP)

NT03+M

18 - Racing Series

Designed with a perimeter brace ring that enhances the wheel strength so it's able to resist deformation or distortion from outer forces, resulting in highly accurate steering response and strength. The NT03+M also features a racing twin valve design which allows for accurate monitoring while adjusting the pressure.

PART NO.	FINISH	SIZE	INSET	PATTERN	BORE	EST. WEIGHT
3658756542	HS	18x7.5	42	5x114.3	72.6	18.5
3658808035	SP	18x8	35	5x100	72.6	19.4
3658851238	SP	18x8.5	38	5X120	72.6	19.6
3658856538	SP	18x8.5	38	5x114.3	72.6	19.6
3658956527	SP	18x9.5	27	5x114.3	72.6	19.9
3658953140	SP, HS	18x9.5	40	5x108	72.6	19.6
3658956540	SP	18x9.5	40	5x114.3	72.6	19.4
3658101225	SP	18x10	25	5x120	72.6	20.5
36581056530	SP	18x10.5	30	5x114.3	72.6	21

Cap # A365-0000SP, Cap Screw # ASCREW04-070-12SA,
Valve Stem # V365-0000CE



SPEC-E

F1 Racing-Grade



Matte Black (BK)

PF01SS

17 - Racing Series

We've taken our successful PF01 racing wheel one step further with a lip and two new color configurations to add a bit of flare to its super sport design. Available in matte black, silver, black machined, and white machined finishes.

PART NO.	FINISH	SIZE	INSET	PATTERN	BORE	EST. WEIGHT
460-780-6550	SP	17x8	50	5x114.3	75	17.24
460-780-6550	BK	17x8	50	5x114.3	75	17.24
460-790-6535	SP	17x9	35	5x114.3	75	19.18
460-790-6535	BK	17x9	35	5x114.3	75	19.18
460-790-6548	SP	17x9	48	5x114.3	75	18.85
460-790-6548	BK	17x9	48	5x114.3	75	18.85
460-790-6560	SP	17x9	60	5x114.3	75	17.41
460-790-6560	BK	17x9	60	5x114.3	75	17.41

Cap # A423-0000SP, Valve Stem # A460-VLV-SP for Silver finish wheels
Cap # A461-CAPCP, Valve Stem # A460-VLV-BK for Black and White wheels



Silver (SP)



SPEC-E

F1 Racing-Grade

TUNING SERIES

Introducing Enkei's Tuning Series. Contemporary wisdom says that you've got to give one good thing up if you want another. Not so with the Enkei Tuning Series! Enkei is proud to offer light weight and strong wheels that won't leave your pocketbook empty. Utilizing Enkei's world class manufacturing abilities, Enkei has lowered the cost of the MAT spin forging production process even further, allowing us to produce a new line of wheels built using the same methods as the Racing series, but at a lower price point.



MOST ADVANCED TECHNOLOGY
Enkei developed a new manufacturing process to produce the next generation of aluminum wheels. Most Advanced Technology (MAT) combines one-piece cast wheel technology with a rim-forming "spinning" technique. Use of this new technology of casting and rim forming, is critical to drastically improve the material properties and strength of wheels. In addition, Enkei's rim-rolled technology shapes the rim to improve material elongation without sacrificing the wheel's hardness.



**NEW
2024**

VANQUISH

17, 18 - Tuning Series

Introducing the Enkei Vanquish, a pinnacle of style and performance crafted for automobiles such as the Toyota GR86, Subaru BRZ, WRX, and more. With its distinctive 8-spoke design, the Vanquish exudes a dynamic and sporty aesthetic. Constructed using Enkei's cutting-edge MAT technology, this wheel achieves an optimal balance of strength and lightweight efficiency. Available in 17 and 18-inch sizes, the Vanquish caters to diverse preferences and enhances the overall driving experience. Choose from a gloss black, gloss gunmetal, and matte bronze, or opt for a custom touch with the special order gloss white. Elevate your ride with the Enkei Vanquish – where form meets function seamlessly.

Gloss Gunmetal (GM)



Gloss Black (BK)



Matte Bronze (ZP)
[non 5x114.3 fitments are special order only]



White -
(WH - Special Order)



A546-DECAL
Decal included
with each wheel.

PART NO.	FINISH	SIZE	INSET	PATTERN	BORE	FACE
546-780-8045	GM, BK	17x8	45	5x100	72.6	F
546-780-6540	GM, BK, ZP	17x8	40	5x114.3	72.6	F
546-790-8045	GM, BK	17x9	45	5x100	72.6	F
546-790-6540	GM, BK, ZP	17x9	40	5x114.3	72.6	F
546-880-8045	GM, BK	18x8	45	5x100	72.6	F
546-880-4445	GM, BK	18x8	45	5x112	72.6	F
546-880-6540	GM, BK, ZP	18x8	40	5x114.3	72.6	F
546-885-8045	GM, BK	18x8.5	45	5x100	72.6	F
546-885-6538	GM, BK, ZP	18x8.5	38	5x114.3	72.6	F
546-895-8045	GM, BK	18x9.5	45	5x100	72.6	R
546-895-1245	GM, BK	18x9.5	45	5x120	72.6	R
546-895-6538	GM, BK, ZP	18x9.5	38	5x114.3	72.6	R

Cap# A476-CAPBK
BMW Cap# A476-CAPBK-BMW for 5x120





Matte Bronze (ZP)



Gunmetal (GM)

Gloss Black (BK)



T6R

17 | 18 - Tuning Series

New Civic Type R
Fitment Available

We've taken some of the most dramatic design aspects that have made the TS-5 so popular and utilized them to build an equally awesome 6-spoke wheel. The T6R is an ideal option for modern sports coupes and sedans like the Civic Type R, WRX, STI, Q50, Q60, Golf GTI, and many others.

PART NO.	FINISH	SIZE	INSET	PATTERN	BORE	FACE
539-780-6540	GM, BK, ZP	17X8	40	5x114.3	72.6	F
539-780-8045	GM, BK, ZP	17X8	45	5x100	72.6	F
539-790-6540	GM, BK, ZP	17X9	40	5x114.3	72.6	F
539-790-8045	GM, BK, ZP	17X9	45	5x100	72.6	F
539-880-4445	GM, BK	18X8	45	5x112	72.6	F
539-880-6540	GM, BK, ZP	18X8	40	5x114.3	72.6	F
539-880-8045	GM, BK, ZP	18X8	45	5x100	72.6	F
539-885-6538	GM, BK, ZP	18X8.5	38	5x114.3	72.6	F
539-885-8045	GM, BK, ZP	18X8.5	45	5x100	72.6	F
539-895-1245	GM, BK, ZP	18X9.5	45	5x120	72.6	R
539-895-6538	GM, BK, ZP	18X9.5	38	5x114.3	72.6	R
539-895-8045	GM, BK, ZP	18X9.5	45	5x100	72.6	R

Cap# A476-CAPBK, Cap# for 5x120 BMW size, Cap# A476-CAPBK BMW



Gloss Black (BK)



Gloss Bronze (ZP)

Storm Gray (GR)



TSR-X

18 | 20 - Tuning Series

Enkei's Tuning Series wheels have taken the market by storm thanks to their high-strength MAT construction and competitive pricing. Due to increasing customer demand for a lightweight 20" wheel in this series, we are proud to introduce the all-new TSR-X.

PART NO.	FINISH	SIZE	INSET	PATTERN	BORE	EST. WEIGHT	FACE
529-880-4445	BK, GR	18x8	45	5x112	72.6	19.30	F
529-880-6535	BK, GR	18x8	35	5x114.3	72.6	19.30	F
529-880-6545	BK, GR	18x8	45	5x114.3	72.6	19.30	F
529-880-8045	BK, GR	18x8	45	5x100	72.6	19.30	F
529-885-1238	BK	18x8.5	38	5x120	72.6	20.40	F
529-885-6538	BK, ZP	18x8.5	38	5x114.3	72.6	20.40	F
529-885-6545	BK	18x8.5	45	5x114.3	72.6	20.40	F
529-885-8045	BK	18x8.5	45	5x100	72.6	20.40	F
529-895-1240	BK	18x9.5	40	5x120	72.6	20.45	R
529-895-6538	BK, ZP	18x9.5	38	5x114.3	72.6	20.45	R
529-895-8045	BK, ZP	18x9.5	45	5x100	72.6	20.45	R
529-285-1240	BK	20x8.5	40	5x120	72.6		F
529-285-6540	BK, ZP	20x8.5	40	5x114.3	72.6		F
529-295-1240	BK	20x9.5	40	5x120	72.6	23.55	R
529-295-6540	BK, ZP	20x9.5	40	5x114.3	72.6	23.55	R

Cap# A476-CAPBK, Cap# for 5x120 BMW size, Cap# A476-CAPBK BMW

TRIUMPH

17, 18 - Tuning Series



Storm Gray (GR)



Gloss Black (BK)

Matte Bronze (ZP)

PART NO.	FINISH	SIZE	INSET	PATTERN	BORE	FACE
543-780-8045	BK,GR, ZP	17x8	45	5x100	72.6	F
543-780-6540	BK,GR, ZP	17x8	40	5x114.3	72.6	F
543-790-8045	BK,GR, ZP	17x9	45	5x100	72.6	F
543-790-6540	BK,GR, ZP	17x9	40	5x114.3	72.6	F
543-880-8045	BK,GR, ZP	18x8	45	5x100	72.6	F
543-880-4445	BK,GR, ZP	18x8	45	5x112	72.6	F
543-880-6545	BK,GR, ZP	18x8	45	5x114.3	72.6	F
543-880-6540	BK,GR, ZP	18x8	40	5x114.3	72.6	F
543-885-8045	BK,GR, ZP	18x8.5	40	5x100	72.6	F
543-885-6538	BK,GR, ZP	18x8.5	38	5x114.3	72.6	F
543-895-8045	BK,GR, ZP	18x9.5	45	5x100	72.6	R
543-895-1245	BK,GR, ZP	18x9.5	45	5x120	72.6	R
543-895-6538	BK,GR, ZP	18x9.5	38	5x114.3	72.6	R

Cap# A476-CAPBK, Cap# for 5x120 BMW size, Cap# A476-CAPBK BMW



TS-V

17 | 18 - Tuning Series



Storm Gray (GR)



Gloss Black (BK)

Gloss Bronze (ZP)

PART NO.	FINISH	SIZE	INSET	PATTERN	BORE	EST. WEIGHT	FACE
522-780-6535	GR, BK	17x8	35	5x114.3	72.6	18.15	F
522-780-6545	GR, BK	17x8	45	5x114.3	72.6	18.15	F
522-780-8045	GR, BK	17x8	45	5x100	72.6	18.15	F
522-790-6540	GR, BK	17x9	40	5x114.3	72.6	19.40	F
522-790-8045	GR, BK	17x9	45	5x100	72.6	19.40	F
522-880-4445	GR, BK	18x8	45	5x112	72.6	18.85	F
522-880-6535	GR, BK	18x8	35	5x114.3	72.6	18.85	F
522-880-6545	GR, BK	18x8	45	5x114.3	72.6	18.85	F
522-880-8045	GR, BK	18x8	45	5x100	72.6	18.85	F
522-885-1238	GR, BK	18x8.5	38	5x120	72.6	19.50	F
522-885-3140	GR, BK	18x8.5	40	5x108	72.6	19.50	F
522-885-6525	GR, BK	18x8.5	25	5x114.3	72.6	19.50	F
522-885-6538	GR, BK, ZP	18x8.5	38	5x114.3	72.6	19.50	F
522-885-6545	GR, BK, ZP	18x8.5	45	5x114.3	72.6	19.50	F
522-885-8045	GR, BK	18x8.5	45	5x100	72.6	19.50	F
522-895-1240	GR, BK	18x9.5	40	5x120	72.6	20.20	R
522-895-6515	GR, BK	18x9.5	15	5x114.3	72.6	20.20	R
522-895-6538	GR, BK, ZP	18x9.5	38	5x114.3	72.6	20.20	R
522-895-8045	GR, BK	18x9.5	45	5x100	72.6	20.20	R

Cap# A476-CAPBK, Cap# for 5x120 BMW size Cap# A476-CAPBK BMW



Matte Bronze (ZP)



TS-5

17 | 18 - Tuning Series

New Civic TypeR
Fitment Available



Gloss Black (BK)

The lightweight Enkei TS-5 is sure to be an instant classic in the tuning world. The TS-5 is the wheel that will have everyone admiring it at a loss for words because it just does everything right. It is remarkably simple and clean, relying on the tried and true 5-spokes and a lip formula, but the TS-5 gets the aesthetics just right. It is the golden ratio in wheel form. It screams motorsports and whispers class at the same time. It is just as much at home on track as it is on the street. With 17" and 18" sizing and widths up to 9.5", the TS-5 will suit a remarkable variety of sport sedans and coupes.



Storm Gray (GR)

PART NO.	FINISH	SIZE	INSET	PATTERN	BORE	EST. WEIGHT	FACE
521-780-6540	GR, BK, ZP	17x8	40	5x114.3	72.6	18.35	F
521-780-8045	GR, BK, ZP	17x8	45	5x100	72.6	18.35	F
521-790-6540	GR, BK, ZP	17x9	40	5x114.3	72.6	20.15	F
521-790-8045	GR, BK, ZP	17x9	45	5x100	72.6	20.15	F
521-880-4445	GR, BK	18x8	45	5x112	72.6	20.05	F
521-880-6540	GR, BK, ZP	18x8	40	5x114.3	72.6	20.05	F
521-880-8045	GR, BK, ZP	18x8	45	5x100	72.6	20.05	F
521-885-3140	GR, BK	18x8.5	40	5x108	72.6	21.30	F
521-885-6538	GR, BK, ZP	18x8.5	38	5x114.3	72.6	21.30	F
521-885-8045	GR, BK, ZP	18x8.5	45	5x100	72.6	21.30	F
521-895-6538	GR, BK, ZP	18x9.5	38	5x114.3	72.6	21.20	R
521-895-8045	GR, BK, ZP	18x9.5	45	5x100	72.6	21.20	R
521-895-1245	BK, ZP	18x9.5	45	5x120	72.6	21.20	R

Cap# A476-CAPBK,
Sticker# A521-STICKBK for Gray & Bronze wheel
Sticker# A521-STICKGM for Black wheel





Gloss Black (BK)



Storm Gray (GR)



Gold (GG)

TS-10

17 | 18 - Tuning Series

Now Available
in 18x10.5

The Enkei TS-10 takes the simplest approach to achieving Enkei's philosophy in creating a lightweight and strong wheel. It's 10 cleanly cut spokes reach the very edge of the wheel, creating the illusion that the wheel is bigger than its true size. The TS-10 is available in concave and flat face profiles dependent on size and width. The TS-10 is finished off with Enkei's signature flat center cap and is available in new storm gray, gloss black, or limited gold paint.

PART NO.	FINISH	SIZE	INSET	PATTERN	BORE	EST. WEIGHT	FACE
499-780-4940	GR, BK	17x8	40	4x100	72.6	17.65	F
499-780-6535	GR, BK	17x8	35	5x114.3	72.6	17.65	F
499-780-6545	GR, BK	17x8	45	5x114.3	72.6	17.65	F
499-780-8045	GR, BK, GG	17x8	45	5x100	72.6	17.65	F
499-790-6535	GR, BK, GG	17x9	35	5x114.3	72.6	19.15	F
499-790-6545	GR, BK	17x9	45	5x114.3	72.6	19.15	F
499-790-8045	GR, BK	17x9	45	5x100	72.6	19.15	F
499-880-4445	GR, BK	18x8	45	5x112	72.6	19.1	F
499-880-6540	GR, BK	18x8	40	5x114.3	72.6	19.1	F
499-880-6550	GR, BK	18x8	50	5x114.3	72.6	19.1	F
499-880-8045	GR, BK	18x8	45	5x100	72.6	19.1	F
499-885-6525	GR, BK, GG	18x8.5	25	5x114.3	72.6	20.1	F
499-885-6535	GR, BK	18x8.5	35	5x114.3	72.6	20.1	F
499-885-6550	GR, BK	18x8.5	50	5x114.3	72.6	20.1	F
499-885-8045	GR, BK	18x8.5	45	5x100	72.6	20.1	F
499-895-6515	GR, BK	18x9.5	15	5x114.3	72.6	19.6	R
499-895-6535	GR, BK	18x9.5	35	5x114.3	72.6	19.6	R
499-895-8045	GR, BK	18x9.5	45	5x100	72.6	19.6	R
499-8105-6525	GR, BK	18x10.5	25	5x114.3	72.6	N.A.	R

Cap# A476-CAPCP
All Black Cap# A476-CAPBK (optional)





Matte Silver (SP)



Matte Black (BK)



Gold (GG)

T6S

17 | 18 - Tuning Series

PART NO.	FINISH	SIZE	INSET	PATTERN	BORE	EST. WEIGHT	FACE
485-780-4445	SP, BK	17x8	45	5x112	72.6	20.55	F
485-780-6535	SP, BK	17x8	35	5x114.3	72.6	20.55	F
485-780-6540	SP, BK	17x8	40	5x114.3	72.6	20.55	F
485-780-6545	SP, BK	17x8	45	5x114.3	72.6	20.55	F
485-780-8045	SP, BK, GG	17x8	45	5x100	72.6	20.55	F
485-790-6535	SP, BK	17x9	35	5x114.3	72.6	22.45	F
485-790-6545	SP, BK	17x9	45	5x114.3	72.6	22.45	F
485-790-8045	SP, BK	17x9	45	5x100	72.6	22.45	F
485-880-1232	SP, BK	18x8	32	5x120	72.6	21.5	F
485-880-1242	SP, BK	18x8	42	5x120	72.6	21.5	F
485-880-4435	SP, BK	18x8	35	5x112	72.6	21.5	F
485-880-4445	SP, BK	18x8	45	5x112	72.6	21.5	F
485-880-6535	SP, BK	18x8	35	5x114.3	72.6	21.5	F
485-880-6545	SP, BK	18x8	45	5x114.3	72.6	21.5	F
485-880-8045	SP, BK, GG	18x8	45	5x100	72.6	21.5	F
485-885-1235	SP, BK	18x8.5	35	5x120	72.6	21.9	F
485-885-4442	SP, BK	18x8.5	42	5x112	72.6	21.9	F
485-885-6525	SP, BK	18x8.5	25	5x114.3	72.6	21.9	F
485-885-6535	SP, BK	18x8.5	35	5x114.3	72.6	21.9	F
485-885-6550	SP, BK	18x8.5	50	5x114.3	72.6	21.9	F
485-885-8045	SP, BK	18x8.5	45	5x100	72.6	21.9	F
485-895-1235	SP, BK	18x9.5	35	5x120	72.6	22.7	R
485-895-4435	SP, BK	18x9.5	35	5x112	72.6	22.7	R
485-895-6515	SP, BK	18x9.5	15	5x114.3	72.6	22.7	R
485-895-6530	SP, BK	18x9.5	30	5x114.3	72.6	22.7	R
485-895-8045	SP, BK, GG	18x9.5	45	5x100	72.6	22.7	R

Cap# A476-CAPBK, BMW/5x120 Cap#476-CAPCP BMW
All Black Optional Cap # A476-CAPBK





TFR

17 | 18 | 19 - Tuning Series

Simplify and add lightness. That's the approach Enkei has taken with the TFR Tuning Series wheel. Seven perfectly contoured spokes start from a center with carefully placed cuts to save every ounce possible. The TFR is the wheel you can autocross with on the weekends and drive to work with during the week. It is truly versatile. The TFR is available in 17", 18", and 19" sizing in all new Copper, Storm Gray, and limited Gunmetal finishes. The wheel is finished off with Enkei's signature flat center cap.



Storm Gray (GR)



Copper (ZP)

PART NO.	FINISH	SIZE	INSET	PATTERN	BORE	EST. WEIGHT	FACE
516-780-4445	GR, ZP	17x8	45	5x112	72.6	18.05	F
516-780-6535	GR, ZP	17x8	35	5x114.3	72.6	18.05	F
516-780-6545	GR, ZP	17x8	45	5x114.3	72.6	18.05	F
516-780-8045	GR, ZP	17x8	45	5x100	72.6	18.05	F
516-790-6540	GR, ZP, GM	17x9	40	5x114.3	72.6	19.80	F
516-790-8045	GR, ZP, GM	17x9	45	5x100	72.6	19.80	F
516-880-4445	GR, ZP	18x8	45	5x112	72.6	18.90	F
516-880-6540	GR, ZP	18x8	40	5x114.3	72.6	18.90	F
516-880-8045	GR, ZP	18x8	45	5x100	72.6	18.90	F
516-885-6538	GR, ZP, GM	18x8.5	38	5x114.3	72.6	19.90	F
516-885-6545	GR, ZP, GM	18x8.5	45	5x114.3	72.6	19.90	F
516-885-8045	GR, ZP, GM	18x8.5	45	5x100	72.6	19.90	F
516-895-6538	GR, ZP, GM	18x9.5	38	5x114.3	72.6	19.85	R
516-895-8045	GR, ZP	18x9.5	45	5x100	72.6	19.85	R
516-985-4435	GR, ZP	19x8.5	35	5x112	72.6	20.75	F
516-985-6535	GR, ZP	19x8.5	35	5x114.3	72.6	20.75	F
516-985-6545	GR, ZP	19x8.5	45	5x114.3	72.6	20.75	F
516-995-6515	GR, ZP	19x9.5	15	5x114.3	72.6	21.15	R
516-995-6535	GR, ZP	19x9.5	35	5x114.3	72.6	21.15	R

Cap# A476-CAPBK

MT SPEC-E

Copper (Select sizes)

RAIJIN

Now Available
in 18x10.5

18 | 19 - Tuning Series



Hyper Silver (HS)



Matte Black (BK)
(Shown with
optional flat cap)



Matte Bronze (BP)

PART NO.	FINISH	SIZE	INSET	PATTERN	BORE	FACE
467-880-1232	HS, BK	18x8	32	5x120	72.6	F
467-880-1242	HS, BK	18x8	42	5x120	72.6	F
467-880-4435	HS, BK	18x8	35	5x112	72.6	F
467-880-4445	HS, BK, BP	18x8	45	5x112	72.6	F
467-880-6540	HS, BK, BP	18x8	40	5x114.3	72.6	F
467-880-6545	HS, BK	18x8	45	5x114.3	72.6	F
467-880-8035	HS	18x8	35	5x100	72.6	F
467-880-8045	HS, BK	18x8	45	5x100	72.6	F
467-885-1238	HS, BK	18x8.5	38	5x120	72.6	F
467-885-4442	HS, BK	18x8.5	42	5x112	72.6	F
467-885-6535	HS, BK, BP	18x8.5	35	5x114.3	72.6	F
467-885-6538	HS, BK	18x8.5	38	5x114.3	72.6	F
467-885-6550	HS, BK	18x8.5	50	5x114.3	72.6	F
467-885-8045	HS, BK, BP	18x8.5	45	5x100	72.6	F
467-895-1235	HS, BK	18x9.5	35	5x120	72.6	R
467-895-4435	HS, BK	18x9.5	35	5x112	72.6	R
467-895-6515	HS, BK	18x9.5	15	5x114.3	72.6	R
467-895-6535	HS, BK, BP	18x9.5	35	5x114.3	72.6	R
467-895-8045	HS, BK, ZP, BP	18x9.5	45	5x100	72.6	R
467-8105-6525	HS, BK	18x10.5	25	5x114.3	72.6	R
467-980-1232	HS, BK	19x8	32	5x120	72.6	F
467-980-1242	HS, BK	19x8	42	5x120	72.6	F
467-980-4435	HS, BK	19x8	35	5x112	72.6	F
467-980-4445	HS, BK	19x8	45	5x112	72.6	F
467-980-6540	HS, BK	19x8	40	5x114.3	72.6	F
467-980-6545	HS, BK	19x8	45	5x114.3	72.6	F
467-985-1238	HS, BK	19x8.5	38	5x120	72.6	F
467-985-4442	HS, BK	19x8.5	42	5x112	72.6	F
467-985-6535	HS, BK	19x8.5	35	5x114.3	72.6	F
467-985-6550	HS, BK	19x8.5	50	5x114.3	72.6	F
467-995-1235	HS, BK	19x9.5	35	5x120	72.6	R
467-995-4435	HS, BK	19x9.5	35	5x112	72.6	R
467-995-6515	HS, BK	19x9.5	15	5x114.3	72.6	R
467-995-6535	HS, BK	19x9.5	35	5x114.3	72.6	R

18" come with Cap # A468-CAPCP; 19" come with Flat Cap # A476-CAPCP
Cap # for 18" 5x120: A467-CAPCPBMW; for 19" 5x120: # A476-CAPCPBMW
Optional flat cap can be used on all Rajjins.

Titanium Gray finish is available for selected 18" sizes





Storm Gray (GR)



Gloss Black (BK)

TMS

17 | 18 - Tuning Series

PART NO.	FINISH	SIZE	INSET	PATTERN	BORE	EST. WEIGHT	FACE
515-780-8045	GR, BK	17x8	45	5x100	72.6	20.5	F
515-780-6545	GR, BK	17x8	45	5x114.3	72.6	20.5	F
515-780-6535	GR, BK	17x8	35	5x114.3	72.6	20.5	F
515-790-8045	GR, BK	17x9	45	5x100	72.6	21.8	F
515-790-6540	GR, BK	17x9	40	5x114.3	72.6	21.8	F
515-880-8045	GR, BK	18x8	45	5x100	72.6	20.85	F
515-880-4445	GR, BK	18x8	45	5x112	72.6	20.85	F
515-880-6545	GR, BK	18x8	45	5x114.3	72.6	20.85	F
515-880-6535	GR, BK	18x8	35	5x114.3	72.6	20.85	F
515-885-8045	GR, BK	18x8.5	45	5x100	72.6	21.9	F
515-885-4445	GR, BK	18x8.5	45	5x112	72.6	21.9	F
515-885-6545	GR, BK	18x8.5	45	5x114.3	72.6	21.9	F
515-885-6538	GR, BK	18x8.5	38	5x114.3	72.6	21.9	F
515-885-6525	GR, BK	18x8.5	25	5x114.3	72.6	21.9	F
515-895-8045	GR, BK	18x9.5	45	5x100	72.6	21	R
515-895-6538	GR, BK	18x9.5	38	5x114.3	72.6	21	R
515-895-6515	GR, BK	18x9.5	15	5x114.3	72.6	21	R

Cap# A476-CAPBK



Platinum Gray (GR)



Matte Black (BK)



Matte Silver (SP)

TS9

17 | 18 - Tuning Series

PART NO.	FINISH	SIZE	INSET	PATTERN	BORE	EST. WEIGHT	FACE
492-780-4445	BK, GR	17x8	45	5x112	72.6	18.7	F
492-780-6535	BK, GR	17x8	35	5x114.3	72.6	18.7	F
492-780-6545	BK, GR	17x8	45	5x114.3	72.6	18.7	F
492-780-8045	BK, GR	17x8	45	5x100	72.6	18.7	F
492-790-6535	BK, GR, SP	17x9	35	5x114.3	72.6	20.35	F
492-790-6545	BK, GR, SP	17x9	45	5x114.3	72.6	20.35	F
492-790-8045	BK, GR, SP	17x9	45	5x100	72.6	20.35	F
492-880-3145	BK, GR, SP	18x8	45	5x108	72.6	19.95	F
492-880-4445	BK, GR	18x8	45	5x112	72.6	19.95	F
492-880-6535	BK, GR	18x8	35	5x114.3	72.6	19.95	F
492-880-6545	BK, GR, SP	18x8	45	5x114.3	72.6	19.95	F
492-880-6550	BK, GR, SP	18x8	50	5x114.3	72.6	19.95	F
492-880-8045	BK, GR, SP	18x8	45	5x100	72.6	19.95	F
492-885-4442	BK, GR, SP	18x8.5	42	5x112	72.6	20.5	F
492-885-6525	BK, GR, SP	18x8.5	25	5x114.3	72.6	20.5	F
492-885-6535	BK, GR, SP	18x8.5	35	5x114.3	72.6	20.5	F
492-885-6550	BK, GR, SP	18x8.5	50	5x114.3	72.6	20.5	F
492-885-8040	BK, GR	18x8.5	40	5x100	72.6	20.5	F
492-885-8045	BK, GR, SP	18x8.5	45	5x100	72.6	20.5	F
492-895-6515	BK, GR, SP	18x9.5	15	5x114.3	72.6	21.45	R
492-895-6530	BK, GR	18x9.5	30	5x114.3	72.6	21.45	R
492-895-8040	BK, GR, SP	18x9.5	40	5x100	72.6	21.45	R
492-895-8045	BK, GR, SP	18x9.5	45	5x100	72.6	21.45	R

Cap# A476-CAPBK



Pearl Black
(MBM)



TY-5

18 | 19 - Tuning Series

The Enkei TY-5 is an exciting entry in Enkei's lightweight Tuning series. Utilizing a sleek combination of a split 5-spoke style with the center styling cues of a mesh wheel, the TY-5 is a great choice for a wide variety of wheels ranging from small sports coupes to full-size luxury cars. It is available in several exciting colors including hyper black, gloss black, and an all-new limited pearl black. The TY-5 is available in concave and flat face profiles dependent on size and width, and includes Enkei's signature flat center cap.



Hyper Silver (HS)



Gloss Black (BK)

PART NO.	FINISH	SIZE	INSET	PATTERN	BORE	EST. WEIGHT	FACE
498-880-3140	HS, BK, MBM	18x8	40	5x108	72.6	20.05	F
498-880-4445	HS, BK, MBM	18x8	45	5x112	72.6	20.05	F
498-880-6540	HS, BK, MBM	18x8	40	5x114.3	72.6	20.05	F
498-880-6550	HS, BK, MBM	18x8	50	5x114.3	72.6	20.05	F
498-880-8045	HS, BK, MBM	18x8	45	5x100	72.6	20.05	F
498-885-1238	HS, BK, MBM	18x8.5	38	5x120	72.6	21.25	F
498-885-4442	HS, BK, MBM	18x8.5	42	5x112	72.6	21.25	F
498-885-6525	HS, BK, MBM	18x8.5	25	5x114.3	72.6	21.25	F
498-885-6535	HS, BK, MBM	18x8.5	35	5x114.3	72.6	21.25	F
498-885-6550	HS, BK, MBM	18x8.5	50	5x114.3	72.6	21.25	F
498-885-8045	HS, BK, MBM	18x8.5	45	5x100	72.6	21.25	F
498-895-1235	HS, BK, MBM	18x9.5	35	5x120	72.6	20.7	R
498-895-6515	HS, BK, MBM	18x9.5	15	5x114.3	72.6	20.7	R
498-895-6535	HS, BK, MBM	18x9.5	35	5x114.3	72.6	20.7	R
498-895-8045	HS, BK, MBM	18x9.5	45	5x100	72.6	20.7	R
498-980-4445	HS, BK, MBM	19x8	45	5x112	72.6	22.25	F
498-980-6540	HS, BK, MBM	19x8	40	5x114.3	72.6	22.25	F
498-985-1238	HS, BK, MBM	19x8.5	38	5x120	72.6	23.7	F
498-985-4442	HS, BK, MBM	19x8.5	42	5x112	72.6	23.7	F
498-985-6535	HS, BK, MBM	19x8.5	35	5x114.3	72.6	23.7	F
498-995-1235	HS, BK, MBM	19x9.5	35	5x120	72.6	22.2	R
498-995-6515	HS, BK, MBM	19x9.5	15	5x114.3	72.6	22.2	R
498-995-6535	HS, BK, MBM	19x9.5	35	5x114.3	72.6	22.2	R

Cap# A476-CAPCP

Cap for 5x120 BMW size, Cap# A476-CAPCP BMW

All Black Cap# A476-CAPBK (Optional)



KOJIN

17 | 18 - Tuning Series

The KOJIN takes the traditional 5-spoke design and adds just the right contours to give it an aggressive tuner look without being too loud about it. The KOJIN is built using Enkei's original MAT technology to achieve the ultimate in strength and light weight. The Enkei KOJIN is where art and science meet to create the next big step forward in wheels.



Matte Silver (SP)



Matte Black (BK)

PART NO.	FINISH	SIZE	INSET	PATTERN	BORE	EST. WEIGHT	FACE
476-780-1235	SP, BK	17x8	35	5x120	72.6	19.15	F
476-780-4445	SP, BK	17x8	45	5x112	72.6	19.15	F
476-780-6535	SP, BK	17x8	35	5x114.3	72.6	19.15	F
476-780-6540	SP, BK	17x8	40	5x114.3	72.6	19.15	F
476-780-6545	SP, BK	17x8	45	5x114.3	72.6	19.15	F
476-780-8040	SP, BK	17x8	40	5x100	72.6	19.15	F
476-780-8045	SP, BK	17x8	45	5x100	72.6	19.15	F
476-790-6535	SP, BK	17x9	35	5x114.3	72.6	21.00	F
476-790-6545	SP, BK	17x9	45	5x114.3	72.6	21.00	F
476-790-8045	SP, BK	17x9	45	5x100	72.6	21.00	F
476-880-1232	SP, BK	18x8	32	5x120	72.6	20.20	F
476-880-1242	SP, BK	18x8	42	5x120	72.6	20.20	F
476-880-4435	SP, BK	18x8	35	5x112	72.6	20.20	F
476-880-4445	SP, BK	18x8	45	5x112	72.6	20.20	F
476-880-6540	SP, BK	18x8	40	5x114.3	72.6	20.20	F
476-880-6545	SP, BK	18x8	45	5x114.3	72.6	20.20	F
476-880-8040	SP, BK	18x8	40	5x100	72.6	20.20	F
476-880-8045	SP, BK	18x8	45	5x100	72.6	20.20	F
476-885-1235	SP, BK	18x8.5	35	5x120	72.6	20.60	F
476-885-4442	SP, BK	18x8.5	42	5x112	72.6	20.60	F
476-885-6525	SP, BK	18x8.5	25	5x114.3	72.6	20.60	F
476-885-6535	SP, BK	18x8.5	35	5x114.3	72.6	20.60	F
476-885-6550	SP, BK	18x8.5	50	5x114.3	72.6	20.60	F
476-885-8045	SP, BK	18x8.5	45	5x100	72.6	20.60	F
476-895-1235	SP, BK	18x9.5	35	5x120	72.6	20.25	R
476-895-1245	SP, BK	18x9.5	45	5x120	72.6	20.25	R
476-895-4435	SP, BK	18x9.5	35	5x112	72.6	20.25	R
476-895-6515	SP, BK	18x9.5	15	5x114.3	72.6	20.25	R
476-895-6530	SP, BK	18x9.5	30	5x114.3	72.6	20.25	R
476-895-8045	SP, BK	18x9.5	45	5x100	72.6	20.25	R

Cap# A476-CAPCP

Cap for 5x120 BMW Cap# A476-CAPCP BMW

All Black Cap# A476-CAPBK (Optional)





Storm Gray (SP)



Gloss Black (BK)



Matte Bronze (ZP)

TS-7

18 - Tuning Series

New Civic TypeR
Fitment Available

The TS-7 is Enkei's newest addition to the Tuning Series lineup. In fact, the TS-7 is essentially a revival of the classic Enkei TS-7. It's not just a recreation of the old wheel though. The TS-7 utilizes Enkei's innovative MAT technology in order to build a wheel that is both lightweight and strong. The TS-7 is available in gloss black, bronze, and storm gray, and all specs come with Enkei's signature flat center cap. With sizing ranging from 18x8 up to 18x9.5, the TS-7 is a solid choice for cars like the Subaru WRX STI, Civic Type R, Toyota GT86, and many others.

PART NO.	FINISH	SIZE	INSET	PATTERN	BORE	FACE
535-880-4445	SP, BK	18x8	45	5x112	72.6	F
535-880-6535	SP, BK, ZP	18x8	35	5x114.3	72.6	F
535-880-6545	SP, BK, ZP	18x8	45	5x114.3	72.6	F
535-880-8045	SP, BK, ZP	18x8	45	5x100	72.6	F
535-885-1238	SP, BK, ZP	18x8.5	38	5x120	72.6	F
535-885-6538	SP, BK, ZP	18x8.5	38	5x114.3	72.6	F
535-885-6545	SP, BK, ZP	18x8.5	45	5x114.3	72.6	F
535-885-8045	SP, BK, ZP	18x8.5	45	5x100	72.6	F
535-895-1245	SP, BK, ZP	18x9.5	45	5x120	72.6	R
535-895-6538	SP, BK, ZP	18x9.5	38	5x114.3	72.6	R
535-895-8045	SP, BK, ZP	18x9.5	45	5x100	72.6	R

Cap# A476-CAPBK,

Cap for 5x120 BMW Cap# A476-CAPCP BMW





TM-7

17 | 18 - Tuning Series

For decades, mesh wheel designs have been popular for numerous applications ranging from luxury sedans to hardcore track machines. It is truly a timeless design. Enkei has put a literal twist on this classic style with the all new Enkei TM-7 Tuning Series wheel. Utilizing a clean and balanced seven-split-spoke design, the TM-7 perfectly combines style with strength. The TM-7 is built using Enkei's world-class MAT process to keep its weight low for increased performance both on the street and the race track. The TM7 is available in Storm Gray or Gloss Black with flat or concave face profiles, both with Enkei's signature flat center cap.

Storm Gray (GR)



Gloss Black (BK)

PART NO.	FINISH	SIZE	INSET	PATTERN	BORE	EST. WEIGHT	FACE
507-780-6535	GR, BK	17x8	35	5x114.3	72.6	18.10	F
507-780-6545	GR, BK	17x8	45	5x114.3	72.6	18.10	F
507-780-8045	GR, BK	17x8	45	5x100	72.6	18.10	F
507-790-6535	GR, BK	17x9	35	5x114.3	72.6	20.00	F
507-790-6545	GR, BK	17x9	45	5x114.3	72.6	20.00	F
507-790-8045	GR, BK	17x9	45	5x100	72.6	20.00	F
507-880-4445	GR, BK	18x8	45	5x112	72.6	20.05	F
507-880-6535	GR, BK	18x8	35	5x114.3	72.6	20.05	F
507-880-6545	GR, BK	18x8	45	5x114.3	72.6	20.05	F
507-880-8045	GR, BK	18x8	45	5x100	72.6	20.05	F
507-885-6525	GR, BK	18x8.5	25	5x114.3	72.6	20.80	F
507-885-6538	GR, BK	18x8.5	38	5x114.3	72.6	20.80	F
507-885-6545	GR, BK	18x8.5	45	5x114.3	72.6	20.80	F
507-885-8045	GR, BK	18x8.5	45	5x100	72.6	20.80	F
507-895-6515	GR, BK	18x9.5	15	5x114.3	72.6	20.20	R
507-895-6538	GR, BK	18x9.5	38	5x114.3	72.6	20.20	R
507-895-8045	GR, BK	18x9.5	45	5x100	72.6	20.20	R

Cap# A476-CAPCP
 Cap# A476-CAPBK (All Black)



CLASSIC SERIES

Introducing Enkei's Classic Series. Enkei Wheels is reviving four classic wheels associated with the heydays of import car tuning. The Enkei J-Speed, ENKEI 92, Apache II and COMPE are the latest creation from the Japanese wheel manufacturer and promises to bring a new level of excitement to the wheel market.



Gold (GG)



Black (BK)

Silver (SP)

ENKEI92

15 - CLASSIC SERIES

PART NO.	FINISH	SIZE	INSET	PATTERN	BORE
465-570-4838	GG, SP, BK	15x7	38	4X114.3	72.6
465-570-4938	GG, SP, BK	15x7	38	4X100	72.6
465-570-6538	GG, SP, BK	15x7	38	5x114.3	72.6
465-580-4825	GG, SP, BK	15x8	25	4X114.3	72.6
465-580-4925	GG, SP, BK	15x8	25	4X100	72.6

Cap# A465-CAPCP

SPEC-E



Matte Gunmetal (GM)



Silver (SP)

COMPE

15 | 16 - CLASSIC SERIES

PART NO.	FINISH	SIZE	INSET	PATTERN	BORE
477-555-1517	GM, SP	15x5.5	17	4x130	87
477-570-4800	GM, SP	15x7	0	4x114.3	72.6
477-570-4825	GM	15x7	25	4x114.3	72.6
477-570-4938	GM, SP	15x7	38	4x100	72.6
477-570-6538	GM	15x7	38	5x114.3	72.6
477-580-4800	GM	15x8	0	4x114.3	72.6
477-580-4825	GM	15x8	25	4x114.3	72.6
477-580-4925	GM	15x8	25	4x100	72.6
477-670-4800	GM	16x7	0	4x114.3	72.6
477-670-4825	GM	16x7	25	4x114.3	72.6
477-670-4925	GM	16x7	25	4x100	72.6
477-670-4938	GM	16x7	38	4x100	72.6
477-670-6538	GM	16x7	38	5x114.3	72.6
477-680-4800	GM	16x8	0	4x114.3	72.6
477-680-4825	GM	16x8	25	4x114.3	72.6
477-680-4938	GM, SP	16x8	38	4x100	72.6
477-680-8025	GM	16x8	25	5x100	72.6

Cap# A477-CAPCP

SPEC-E

PERFORMANCE SERIES

Introducing Enkei's Performance Series. The Enkei performance series represents the absolute best combination of styling, performance, and value in the aftermarket wheel business today. Enkei's expert engineering and world-class manufacturing allow us to offer high quality wheels in a wide range of vehicle applications without breaking the bank.



Gloss Light Gunmetal (GM)

**NEW
2024**



GIOTTO

18 | 19 - PERFORMANCE SERIES

Introducing the Enkei Giotto, a stunning blend of modern aesthetics and refined details. With five sleek spokes, this wheel exudes sophistication in either 18 or 19 inches, available in a stunning gloss black or a bold gunmetal finish. Its contemporary design seamlessly merges elegance with a touch of motorsports flair, making a statement on any vehicle.



Gloss Black (BK- Special Order only)

PART NO.	FINISH	SIZE	INSET	PATTERN	BORE
548-880-1250	GM	18x8	50	5x120	72.6
548-880-8045	GM	18x8	45	5x100	72.6
548-880-4445	GM	18x8	45	5x112	72.6
548-880-6550	GM	18x8	50	5x114.3	72.6
548-880-6545	GM	18x8	45	5x114.3	72.6
548-880-6535	GM	18x8	35	5x114.3	72.6
548-980-1250	GM	19x8	50	5x120	72.6
548-980-4445	GM	19x8	45	5x112	72.6
548-980-6550	GM	19x8	50	5x114.3	72.6
548-980-6545	GM	19x8	45	5x114.3	72.6
548-980-6535	GM	19x8	35	5x114.3	72.6

Cap# A548-CAPBK

SPEC-E

CLASSIC SERIES - ENKEI.COM | 35



**NEW
2024**

Matte Bronze (ZP)



Semi Matte Black (BK)



Semi Matte Gunmetal (GM -Special Order)

ADVENTURER

17 | 18 - PERFORMANCE SERIES

The Enkei Adventurer wheel is tailor-made for outdoor enthusiasts who crave off-road escapades. Its robust design features 10 spokes with intricate detailing, providing both durability and style. Available in black, bronze, and a special order matte gunmetal finish, this wheel adds a rugged edge to your vehicle. Choose between 17 or 18 inches to suit your preference, and embark on your next adventure with confidence and style.

PART NO.	FINISH	SIZE	INSET	PATTERN	BORE
547-775-8035	ZP, BK	17x7.5	35	5x100	72.6
547-775-3135	ZP, BK	17x7.5	35	5x108	63.4
547-775-6535	ZP, BK	17x7.5	35	5x114.3	72.6
547-880-8035	ZP, BK	18x8	35	5x100	72.6
547-880-3135	ZP, BK	18x8	35	5x108	63.4
547-880-6535	ZP, BK	18x8	35	5x114.3	72.6

Cap# A547-CAPBK

Note: 18x8, 5x108, +35 are Special Order only regardless of finish.

SPEC-E

VULCAN

17 | 18 | 19 - PERFORMANCE SERIES



Black Machined (BKM)



Gloss Black (BK)



Gloss Anthracite (AP)

The Enkei Vulcan Performance wheel is the perfect choice for those wanting to add bold style to their sporty coupes, sedans, and crossovers. The Vulcan's unique split spoke design starts with pockets around the center that are not only a styling cue, but a design feature that also helps reduce the weight of the wheel.

PART NO.	FINISH	SIZE	INSET	PATTERN	BORE
517-775-6538	BKM, BK, AP	17x7.5	38	5x114.3	72.6
517-775-6545	BKM, BK, AP	17x7.5	45	5x114.3	72.6
517-775-8045	BKM, BK, AP	17x7.5	45	5x100	72.6
517-880-1240	BKM, BK	18x8	40	5x120	72.6
517-880-4445	BKM, BK, AP	18x8	45	5x112	72.6
517-880-6535	BKM, BK, AP	18x8	35	5x114.3	72.6
517-880-6545	BKM, BK, AP	18x8	45	5x114.3	72.6
517-880-8045	BKM, BK, AP	18x8	45	5x100	72.6
517-980-4445	BKM, BK	19x8	45	5x112	72.6
517-980-6535	BKM, BK	19x8	35	5x114.3	72.6
517-980-6545	BKM, BK	19x8	45	5x114.3	72.6

Cap# A481-CAPCP

SPEC-E

PHOENIX

17 | 18 - PERFORMANCE SERIES



Blue Gunmetal



Gloss Black

The Enkei Phoenix is the perfect choice for those looking to add an aggressively styled wheel to their daily driven car. The Phoenix features a distinctive pentagonal center with 5 sharply cut dual level spokes that create incredible depth while retaining excellent caliper clearance. The spokes split shortly off of the center at an aggressive angle and flare out all the way to the outer flange. The Phoenix is available in 17" and 18" sizing for most sedans, coupes, and small SUVs.

PART NO.	FINISH	SIZE	INSET	PATTERN	BORE
523-775-6538	BGM, BK	17x7.5	38	5x114.3	72.6
523-775-6545	BGM, BK	17x7.5	45	5x114.3	72.6
523-775-8045	BGM, BK	17x7.5	45	5x100	72.6
523-880-1235	BGM, BK	18x8	35	5x120	72.6
523-880-3140	BGM, BK	18x8	40	5x108	72.6
523-880-4445	BGM, BK	18x8	45	5x112	72.6
523-880-6535	BGM, BK	18x8	35	5x114.3	72.6
523-880-6545	BGM, BK	18x8	45	5x114.3	72.6
523-880-8045	BGM, BK	18x8	45	5x100	72.6

Cap# A481-CAPBK, Cap# for 5x120 A474-CAPBK-BMW

SPEC-E

ENKEI.COM | 37



Matte Bronze (ZP)



Matte Black (BK)



Matte Gunmetal (GM) (Special Order)

OVERLANDER

17 | 18 - PERFORMANCE SERIES

The Overlander is designed with crossovers and small SUVs in mind. It is a multispoke wheel with rouged rally aesthetics. The Overlander has everything you'd expect from an Enkei wheel – built strong, with industry-leading quality standards, and designed to last. If you're looking for a strong rugged wheel, not only in looks but also in build quality, the new Enkei Overlander is made for you.

Important: The Overlander 18x8, 5x108 bolt pattern fitment is a Special Order part number. Special Order part numbers do not go into production until ordered and will likely have a longer delivery time. The Matte Gunmetal finish is also a Special Order finish on all Overlander part numbers. Please consult with an Enkei Wheels dealer for details on availability and delivery times.

PART NO.	FINISH	SIZE	INSET	PATTERN	BORE
544-775-8035	BK, ZP, GM	17x7.5	35	5x100	72.6
544-775-3135	BK, ZP, GM	17x7.5	35	5x108	63.4
544-775-6535	BK, ZP, GM	17x7.5	35	5x114.3	72.6
544-880-8035	BK, ZP, GM	18x8	35	5x100	72.6
544-880-3135	BK, ZP, GM	18x8	35	5x108	63.4
544-880-6535	BK, ZP, GM	18x8	35	5x114.3	72.6

Cap# A476-CAPBK **SPEC-E**



Storm Gray
(GR)

Gloss Black (BK)

XM-6

17 | 18 | 20 - PERFORMANCE SERIES

SUV/Crossover
Fitment Available

Our mid-size sedans have been replaced with versatile SUVs. That doesn't mean that we have to give up cool wheels though. Introducing the Enkei XM6. Its clean and concave mesh design can dramatically improve the look of any modern unibody SUV or even large sedan. Available in sizing starting at 17x7.5 and up to 20x9.5, the XM6 is available in fitments for a variety of cars & SUVs.

PART NO.	FINISH	SIZE	INSET	PATTERN	BORE	EST. WEIGHT	FACE
531-775-6540	GR, BK	17x7.5	40	5x114.3	72.6	N/A	F
531-775-6540	GRH, BKH	17x7.5	40	5x114.3	64.1	N/A	F
531-775-8045	GR, BK	17x7.5	45	5x100	72.6	N/A	F
531-880-1240	GR, BK	18x8	40	5x120	72.6	20.95	F
531-880-4445	GR, BK	18x8	45	5x112	72.6	20.95	F
531-880-6535	GR, BK	18x8	35	5x114.3	72.6	20.95	F
531-880-6540	GR, BK	18x8	40	5x114.3	72.6	20.95	F
531-285-1240	GR, BK	20x8.5	40	5x120	72.6	24.35	F
531-285-4440	GR, BK	20x8.5	40	5x112	72.6	24.35	F
531-285-6540	GR, BK	20x8.5	40	5x114.3	72.6	24.35	F
531-295-1240	GR, BK	20x9.5	40	5x120	72.6	N/A	R
531-295-6540	GR, BK	20x9.5	40	5x114.3	72.6	N/A	R

Cap# A476-CAPBK
For 5x120, A476-CAPBK-BMW

SPEC-E



Anthracite
Machined
(AM)

Gloss Black (BK)

VORTEX 5

17 | 18 | 20 - PERFORMANCE SERIES

SUV/
Crossover
Fitment
Available

The Vortex5 is one of Enkei's boldest designs of all time. Featuring a number of sharply angled thinner spokes coming together to create a cohesive broad-spoke look, the Vortex5 is the perfect wheel choice for those looking to make a statement. It works well on uni-body SUV and CUVs and on mid and full-size sedans. The Vortex5 is available 17", 18", and 20" in an all-new anthracite machined or gloss black finish. Enkei's signature flat center cap completes the look.

PART NO.	FINISH	SIZE	INSET	PATTERN	BORE
510-775-6540	AM, BK	17x7.5	40	5x114.3	72.6
510-775-8045	AM, BK	17x7.5	45	5x100	72.6
510-880-1240	AM, BK	18x8	40	5x120	72.6
510-880-3140	AM, BK	18x8	40	5x108	72.6
510-880-5140	AM, BK	18x8	40	5x110	72.6
510-880-6538	AM, BK	18x8	38	5x114.3	72.6
510-285-1240	AM, BK	20x8.5	40	5x120	72.6
510-285-6538	AM, BK	20x8.5	38	5x114.3	72.6

Cap# A481-CAPCP
Cap# A474-CAPCP-BMW for 5x120
Optional Domed Cap# A466-CAPCP

SPEC-E

DRACO

15 | 16 | 17 | 18 - PERFORMANCE SERIES

From day one, Enkei has always been about offering stylish and sporty wheels that are also tough enough to stand up to the rigors of high-speed driving. We've taken that philosophy to heart with the all new Enkei Draco. This modern and aggressive V-Spoke wheel is well suited to modern performance sedans and even some small SUVs & Crossovers. It is available 16" through 18" in an all-new anthracite or black machined finish and comes with a cleanly styled center cap to complete the look.

PART NO.	FINISH	SIZE	INSET	PATTERN	BORE
509-670-6538	AP, BKM	16x7	38	5x114.3	72.6
509-670-6545	AP, BKM	16x7	45	5x114.3	72.6
509-670-8042	AP, BKM	16x7	42	5x100	72.6
509-775-6538	AP, BKM	17x7.5	38	5x114.3	72.6
509-775-6545	AP, BKM	17x7.5	45	5x114.3	72.6
509-775-8045	AP, BKM	17x7.5	45	5x100	72.6
509-880-1235	AP	18x8	35	5x120	72.6
509-880-3140	AP	18x8	40	5x108	72.6
509-880-4445	AP, BKM	18x8	45	5x112	72.6
509-880-6535	AP, BKM	18x8	35	5x114.3	72.6
509-880-6545	AP, BKM	18x8	45	5x114.3	72.6
509-880-8045	AP, BKM	18x8	45	5x100	72.6

Cap# AA501-CAPBK,

Cap# for 5x120: A501-CAPBKBMW for 5x120

SPEC-E



Anthracite (AP)

Black Machined (BKM)

PHANTOM

18 | 19 | 20 - PERFORMANCE SERIES

SUV/
Crossover
Fitment
Available

The Enkei Phantom is a boldly styled choice with sharp and clean lines for those that want to add flair to their sporty sedans, crossovers, and 5-lug SUVs. Taking styling cues from both traditional mesh wheels and split-spoke styles, the Phantom is sure to make your ride stand out from the crowd. The Phantom is available in 18", 19", and 20" sizing in black machined and anthracite finishes, and is finished off with Enkei's signature flat center cap.

PART NO.	FINISH	SIZE	INSET	PATTERN	BORE
518-880-1240	BKM, AP	18x8	40	5x120	72.6
518-880-3140	BKM, AP	18x8	40	5x108	72.6
518-880-4445	BKM, AP	18x8	45	5x112	72.6
518-880-6540	BKM, AP	18x8	40	5x114.3	72.6
518-980-4445	BKM, AP	19x8	45	5x112	72.6
518-980-6535	BKM, AP	19x8	35	5x114.3	72.6
518-980-6545	BKM, AP	19x8	45	5x114.3	72.6
518-285-1240	BKM, AP	20x8.5	40	5x120	72.6
518-285-6540	BKM, AP	20x8.5	40	5x114.3	72.6

Cap# A481-CAPCP

Cap# for 5x120 A474-CAPCP-BMW

Optional Domed Cap: #A466-CAPCP

SPEC-E



Black
Machined
(BKM)

Anthracite (AP)



Gunmetal (GM)

Gloss Black (BK)

PX-10

SUV/Crossover
Fitment Available

16 | 17 | 18 | 19 - PERFORMANCE SERIES

The PX-10 is the perfect option for those looking to add a sporty up-scale look to their daily drivers. Featuring 10 evenly spaced spokes that terminate before reaching the flange to give the wheel a small lip, the PX-10 is all about being understated. The PX-10 is available in both gloss black and gunmetal in sizing ranging from 16" all the way up to 19". The PX-10 is finished off with Enkei's signature flat center cap.

PART NO.	FINISH	SIZE	INSET	PATTERN	BORE
536-670-6538	BK, GM	16x7	38	5x114.3	72.6
536-670-6545	BK, GM	16x7	45	5x114.3	72.6
536-670-8045	BK, GM	16x7	45	5x100	72.6
536-775-6540	BK, GM	17x7.5	40	5x114.3	72.6
536-775-8045	BK, GM	17x7.5	45	5x100	72.6
536-880-4445	BK, GM	18x8	45	5x112	72.6
536-880-6535	BK, GM	18x8	35	5x114.3	72.6
536-880-6545	BK, GM	18x8	45	5x114.3	72.6
536-880-8045	BK, GM	18x8	45	5x100	72.6
536-980-4445	BK, GM	19x8	45	5x112	72.6
536-980-6535	BK, GM	19x8	35	5x114.3	72.6
536-980-6545	BK, GM	19x8	45	5x114.3	72.6

Cap# A476-CAPCP

SPEC-E



Black
Machined
(BKM)

Gloss Black (BK)

ONX

SUV/Crossover
Fitment Available

17 | 18 | 20 - PERFORMANCE SERIES

The ONX is an exciting addition to Enkei's SUV/Crossover lineup. Using the design language of the popular Enkei CUV, we've created a sporty new option for owners of crossovers and small SUVs. The ONXs sharply angled spokes extend all the way to the edge of the wheel to give it the appearance that it is larger than it really is.

PART NO.	FINISH	SIZE	INSET	PATTERN	BORE
505-775-6545	BK, BKM	17x7.5	45	5x114.3	72.6
505-775-8045	BK, BKM	17x7.5	45	5x100	72.6
505-880-1240	BK, BKM	18x8	40	5x120	72.6
505-880-3140	BK, BKM	18x8	40	5x108	72.6
505-880-5140	BK, BKM	18x8	40	5x110	72.6
505-880-6540	BK, BKM	18x8	40	5x114.3	72.6
505-285-1240	BK, BKM	20x8.5	40	5x120	72.6
505-285-4435	BK, BKM	20x8.5	35	5x112	72.6
505-285-6540	BK, BKM	20x8.5	40	5x114.3	72.6

Cap# A481-CAPCP

Cap# A474-CAPBK-BMW for 5x120

Optional Domed Cap# A466-CAPCP

SPEC-E



Gunmetal (GM)

Hyper Silver (HS)

EKM3

17 | 18 - PERFORMANCE SERIES

PART NO.	FINISH	SIZE	INSET	PATTERN	BORE
442-770-6538	HS, GM	17x7	38	5X114.3	72.6
442-770-6545	HS, GM	17x7	45	5X114.3	72.6
442-770-8045	HS, GM	17x7	45	5X100	72.6
442-875-6538	HS, GM	18x7.5	38	5X114.3	72.6
442-875-6545	HS, GM	18x7.5	45	5X114.3	72.6
442-875-8045	HS, GM	18x7.5	45	5X100	72.6
442-880-1232	HS, GM	18x8	32	5X120	72.6
442-880-1242	HS, GM	18x8	42	5X120	72.6
442-880-4435	HS, GM	18x8	35	5X112	72.6
442-880-4445	HS, GM	18x8	45	5X112	72.6
442-880-5140	HS, GM	18x8	40	5X110	72.6
442-880-6540	HS, GM	18x8	40	5X114.3	72.6

Cap# A431-CAPCP



Matte Bronze (ZP)

Hyper Black (HB)

EV5

17 | 18 - PERFORMANCE SERIES

Chevy Cruze & Sonic Fitment Available

PART NO.	FINISH	SIZE	INSET	PATTERN	BORE
446-770-0138	HB, ZP	17x7	38	4x100/114.3	72.6
446-770-0145	HB, ZP	17x7	45	4x100/114.3	72.6
446-770-0238	HB, ZP	17x7	38	5x100/114.3	72.6
446-770-0245	HB, ZP	17x7	45	5x100/114.3	72.6
446-770-1145	HB, ZP	17x7	45	4x100/108	72.6
446-770-5238	HB, ZP	17x7	38	5x105/5x110	72.6
446-875-0238	HB, ZP	18x7.5	38	5x100/114.3	72.6
446-875-0245	HB, ZP	18x7.5	45	5x100/114.3	72.6
446-875-5238	HB, ZP	18x7.5	38	5x105/110	72.6

Cap# A443-CAPCP



Matte Black with Red Trim (BK)

GW8

17 | 18 - PERFORMANCE SERIES

PART NO.	FINISH	SIZE	INSET	PATTERN	BORE
448-770-0142	BK	17x7	42	4x100/4x114.3	72.6
448-770-0242	BK	17x7	42	5x100/5x114.3	72.6
448-770-1142	BK	17x7	42	4x100/4x108	72.6
448-875-0142	BK	18x7.5	42	4x100/4x114.3	72.6
448-875-0242	BK	18x7.5	42	5x100/5x114.3	72.6
448-875-1142	BK	18x7.5	42	4x100/4x108	72.6

Cap# A443-CAPCP

Replacement Trim Red # A448-TRIRD-SET

Replacement Trim Chrome # A448-TRICP-SET

Both red and chrome trims are included with each wheel.





Silver (SP)



Matte Black (BK)

EDR9

15 | 16 | 17 | 18 - PERFORMANCE SERIES

PART NO.	FINISH	SIZE	INSET	PATTERN	BORE
441-565-0138	BK, SP	15x6.5	38	4x100/114.3	72.6
441-565-0238	BK, SP	15x6.5	38	5x100/114.3	72.6
441-670-0138	BK, SP	16x7	38	4x100/114.3	72.6
441-670-0145	BK, SP	16x7	45	4x100/114.3	72.6
441-670-0238	BK, SP	16x7	38	5x100/114.3	72.6
441-670-0245	BK, SP	16x7	45	5x100/114.3	72.6
441-670-1138	BK, SP	16x7	38	4x100/108	72.6
441-770-0138	BK, SP	17x7	38	4x100/114.3	72.6
441-770-0145	BK, SP	17x7	45	4x100/114.3	72.6
441-770-0238	BK, SP	17x7	38	5x100/114.3	72.6
441-770-0245	BK, SP	17x7	45	5x100/114.3	72.6
441-770-1138	BK, SP	17x7	38	4x100/108	72.6
441-780-0238	BK, SP	17x8	38	5x100/114.3	72.6
441-780-0245	BK, SP	17x8	45	5x100/114.3	72.6
441-780-2645	BK, SP	17x8	45	5x112/114.3	72.6
441-780-5238	BK, SP	17x8	38	5x105/110	72.6
441-875-0238	BK, SP	18x7.5	38	5x100/114.3	72.6
441-875-0245	BK, SP	18x7.5	45	5x100/114.3	72.6
441-875-5238	BK, SP	18x7.5	38	5x105/110	72.6

Cap# A431-CAPCP

SPEC-E



Black Machined (BKM)



FD-05

16 | 17 | 18 - PERFORMANCE SERIES

Named the FD-05, this is the official wheel of Formula Drift. Good looks, the right sizes and the high quality associated with the ENKEI brand will make this wheel a winner with enthusiasts & every-day drivers alike. Available in gloss black with bright-machined accents.

PART NO.	FINISH	SIZE	INSET	PATTERN	BORE
434-670-4938	BKM	16x7	38	4x100	72.6
434-670-6538	BKM	16x7	38	5x114.3	72.6
434-670-6550	BKM	16x7	50	5x114.3	72.6
434-670-8038	BKM	16x7	38	5x100	72.6
434-770-4450	BKM	17x7	50	5x112	72.6
434-770-4940	BKM	17x7	40	4x100	72.6
434-770-6540	BKM	17x7	40	5x114.3	72.6
434-770-6550	BKM	17x7	50	5x114.3	72.6
434-770-8040	BKM	17x7	40	5x100	72.6
434-770-8050	BKM	17x7	50	5x100	72.6
434-875-4453	BKM	18x7.5	53	5x112	72.6
434-875-6545	BKM	18x7.5	45	5x114.3	72.6
434-875-8045	BKM	18x7.5	45	5x100	72.6

Cap# A434-CAPCP

SPEC-E



Gloss Gunmetal (GMH)



YX-5

17 | 18 | 20 - PERFORMANCE SERIES

SUV/Crossover
Fitment Available

The all-new Enkei YX-5 is big and bold in all the right ways. It takes the split 5-spoke design that Enkei has perfected many times over and sharpens all of its edges to create an ultramodern design to perfectly complement today's sports sedans and unibody SUVs. The YX-5 is available in 17", 18", and 20" sizing. All specs come in our gloss gunmetal finish and include Enkei's signature flat center cap.

PART NO.	FINISH	SIZE	INSET	PATTERN	BORE
537-775-8045	GM	17x7.5	45	5x100	72.6
537-775-6540	GMH	17x7.5	40	5x114.3	64.1
537-775-6540	GM	17x7.5	40	5x114.3	72.6
537-880-1240	GM	18x8	40	5x120	72.6
537-880-4445	GM	18x8	45	5x112	72.6
537-880-6545	GM	18x8	45	5x114.3	72.6
537-880-6535	GM	18x8	35	5x114.3	72.6
537-285-1240	GM	20x8.5	40	5x120	72.6
537-285-4440	GM	20x8.5	40	5x112	72.6
537-285-6540	GM	20x8.5	40	5x114.3	72.6

Cap# A476-CAPBK, Cap# for 5x120: A476-CAPBK BMW

537-775-6540GMH - no hub ring needed and can use OEM lug nuts when used on Honda vehicles.

SPEC-E



Gloss Black (BK)



Anthracite (AP)

HORNET

17 | 18 | 19 - PERFORMANCE SERIES

The Enkei Hornet is the perfect choice for those looking to add some aggressive flair to their daily driver. Featuring 5 paired and sharply cut spokes that converge on a minimalist center. The Hornet is available 17", 18", and 19" in gloss black and anthracite finishes for a wide variety of modern cars & SUVs.

PART NO.	FINISH	SIZE	INSET	PATTERN	BORE
533-775-6540	BK, AP	17x7.5	40	5x114.3	72.6
533-775-8045	BK, AP	17x7.5	45	5x100	72.6
533-880-1240	BK, AP	18x8	40	5x120	72.6
533-880-4445	BK, AP	18x8	45	5x112	72.6
533-880-6535	BK, AP	18x8	35	5x114.3	72.6
533-880-6545	BK, AP	18x8	45	5x114.3	72.6
533-880-8045	BK, AP	18x8	45	5x100	72.6
533-980-4445	BK, AP	19x8	45	5x112	72.6
533-980-6535	BK, AP	19x8	35	5x114.3	72.6
533-980-6545	BK, AP	19x8	45	5x114.3	72.6

Cap# A481-CAPBK,
Cap# for 5x120: A474-CAPBK-BMW

SPEC-E



Hyper Black (HB)



Matte Black (BK)

M52

15 | 16 | 17 | 18 - PERFORMANCE SERIES

The M52 is Enkei's take on the traditional split 5-spoke wheel. Available in 15" through 18" sizing and in hyper black or matte black, the M52 is the perfect choice to add sporty flair to any sporty coupe, sedan, or crossover.

PART NO.	FINISH	SIZE	INSET	PATTERN	BORE
480-565-4938	BK	15x6.5	38	4x100	72.6
480-670-6538	BK, HB	16x7	38	5x114.3	72.6
480-670-6545	BK, HB	16x7	45	5x114.3	72.6
480-670-8038	BK, HB	16x7	38	5x100	72.6
480-670-8045	BK, HB	16x7	45	5x100	72.6
480-775-3138	BK, HB	17x7.5	38	5x108	72.6
480-775-4942	BK, HB	17x7.5	42	4x100	72.6
480-775-6540	BK, HB	17x7.5	40	5x114.3	72.6
480-775-6550	BK, HB	17x7.5	50	5x114.3	72.6
480-775-8045	BK, HB	17x7.5	45	5x100	72.6
480-880-1232	BK	18x8	32	5x120	72.6
480-880-1242	BK, HB	18x8	42	5x120	72.6
480-880-4435	BK, HB	18x8	35	5x112	72.6
480-880-4445	BK, HB	18x8	45	5x112	72.6
480-880-5140	BK, HB	18x8	40	5x110	72.6
480-880-6540	BK, HB	18x8	40	5x114.3	72.6
480-880-6550	BK, HB	18x8	50	5x114.3	72.6
480-880-8045	BK, HB	18x8	45	5x100	72.6

Cap# A466-CAPCP

Cap# for 5x120 A466-CAPCP-BMW

SPEC-E



Black with Machined Lip

LUSSO

18 | 20 - PERFORMANCE SERIES

Staggered
Fitment Available

PART NO.	FINISH	SIZE	INSET	PATTERN	BORE
469-875-5142	BK	18x7.5	42	5X110	72.6
469-875-6542	BK	18x7.5	42	5X114.3	72.6
469-875-8042	BK	18x7.5	42	5X100	72.6
469-880-1240	BK	18x8	40	5X120	72.6
469-880-4445	BK	18x8	45	5X112	72.6
469-880-6540	BK	18x8	40	5X114.3	72.6
469-890-6540	BK	18x9	40	5X114.3	72.6
469-285-1240	BK	20x8.5	40	5X120	72.6
469-285-4440	BK	20x8.5	40	5X112	72.6
469-285-6540	BK	20x8.5	40	5X114.3	72.6
469-295-1235	BK	20x9.5	35	5X120	72.6

Cap# A449-CAPCP

Cap# A449-CAPCPBMW for 5x120

SPEC-E



Silver with Machined Lip (SP)

Matte Black with Machined Lip (BK)

J10

15 | 16 | 17 | 18 - PERFORMANCE SERIES

PART NO.	FINISH	SIZE	INSET	PATTERN	BORE
409-565-01	BK, SP	15x6.5	38	4x100/114.3	72.62
409-565-02	BK, SP	15x6.5	38	5x100/114.3	72.62
409-565-11	BK, SP	15x6.5	38	4x100/108	72.62
409-670-03	BK, SP	16x7	38	5x108/115	72.62
409-670-10	BK, SP	16x7	42	4x100/114.3	72.62
409-670-11	BK, SP	16x7	42	4x100/108	72.62
409-670-12	BK, SP	16x7	38	5x100/114.3	72.62
409-670-26	BK, SP	16x7	38	5x112/114.3	72.62
409-770-03	BK, SP	17x7	38	5x108/115	72.62
409-770-10	BK, SP	17x7	42	4x100/114.3	72.62
409-770-11	BK, SP	17x7	42	4x100/108	72.62
409-770-12	BK, SP	17x7	38	5x100/114.3	72.62
409-770-16	BK, SP	17x7	38	5x112/120	72.62
409-875-10	BK, SP	18x7.5	42	4x100/114.3	72.62
409-875-11	BK, SP	18x7.5	42	4x100/108	72.62
409-875-12	BK, SP	18x7.5	38	5x100/114.3	72.62
409-875-26	BK, SP	18x7.5	38	5x112/114.3	72.62

Cap# A385-0000S



Gloss Black

Hyper Gray

PDC

16 | 17 | 18 - PERFORMANCE SERIES

The PDC starts with a sharply angled center area from which the spokes come up quickly and split off in the classic style. Look closely though and you'll notice a deep diamond shape cut in to the spokes just before the split. This styling cue and the sharp lines on the PDC make it the ideal choice for anything ranging from a small coupe to a full-size luxury car.

PART NO.	FINISH	SIZE	INSET	PATTERN	BORE
502-670-6538	BK, GR	16x7	38	5x114.3	72.6
502-670-6545	BK, GR	16x7	45	5x114.3	72.6
502-775-4942	BK, GR	17x7.5	42	4x100	72.6
502-775-6540	BK, GR	17x7.5	40	5x114.3	72.6
502-775-6550	BK, GR	17x7.5	50	5x114.3	72.6
502-775-8045	BK, GR	17x7.5	45	5x100	72.6
502-880-3145	BK, GR	18x8	45	5x108	72.6
502-880-4445	BK, GR	18x8	45	5x112	72.6
502-880-6540	BK, GR	18x8	40	5x114.3	72.6
502-880-6550	BK, GR	18x8	50	5x114.3	72.6
502-880-8045	BK, GR	18x8	45	5x100	72.6

Cap# A501-CAPBK
Cap# A501-CAPBKBMW for 5x120



TRUCK & SUV SERIES

Introducing Enkei's Truck Series. While Enkei is most well known for its high-performance car wheels, it is proud to offer a range of wheels designed for trucks and SUV's as well. Enkei has applied its unrivaled engineering capabilities to come up with several designs that will stand up to the tough demands that truck and SUV drivers place on their wheels. Utilizing Enkei's world class manufacturing facilities and emphasizing function over flare, the Enkei truck series offers a great way for truck and SUV owners to add some styling to their vehicle, while maintaining the tough and rugged capabilities they count on from their wheels.



Matte Gunmetal (GM)



Matte Black (BK)

Matte Bronze (BP)

CYCLONE

16 | 17 | 18 - TRUCK & SUV SERIES

The Cyclone utilizes Enkei's innovative MAT technology to build a wheel that is both lightweight and strong. With ultra clean design and super concave spokes, the Cyclone is exactly what a truck wheel should be: tough, durable, and easy to clean. When performance and utility take precedence over bling, the Cyclone is the obvious choice. Available in 16", 17", and 18" sizing in both matte black and gunmetal.

PART NO.	FINISH	SIZE	INSET	PATTERN	BORE
538-680-8400	BK, GM, BP	16x8	0	6x139.7	106.1
538-790-8400	BK, GM, BP	17x9	0	6x139.7	106.1
538-790-9512	BK	17x9	12	6x135	87.1
538-890-8400	BK, GM	18x9	0	6x139.7	106.1
538-890-9512	BK	18x9	12	6x135	87.1

Cap# A538-CAPBK



Mirror Finish (MF)



Matte Black (BK)

M6

17 | 18 | 20 - TRUCK & SUV SERIES

PART NO.	FINISH	SIZE	INSET	PATTERN	BORE
482-780-7310MF	MF	17x8	10	5x127	71.6
482-780-8335MF	MF	17x8	35	6x139.7	78
482-780-8410MF	MF	17x8	10	6x139.7	108.5
482-885-5830MF	MF	18x8.5	30	5x150	110
482-885-7320MF	MF	18x8.5	20	5x127	71.6
482-885-8335MF	MF	18x8.5	35	6x139.7	78
482-885-8410MF	MF	18x8.5	10	6x139.7	108.5
482-885-9530MF	MF	18x8.5	30	6x135	87
482-290-7320MF	MF	20x9	20	5x127	71.6
482-290-8330MF	MF	20x9	30	6x139.7	78
482-290-8410MF	MF	20x9	10	6x139.7	108.5
482-290-8420MF	MF	20x9	20	6x139.7	108.5

CAP # A436-CAPCP

CAP # A431-CAPCP FOR 6X114.3 & 5X127





Warranty: ENKEI stands behind every wheel we sell. All ENKEI products come with a lifetime structural warranty. Our limited warranty guarantees that ENKEI wheels will be free from defects in materials and workmanship under normal and reasonable use. Consult the ENKEI wheel owner's manual for complete warranty information and proper care and maintenance.

©ENKEI CORPORATION 2024. All rights reserved. ENKEI and ENKEI logo are trademarks and properties of ENKEI. No reproduction in whole or in part without written consent from ENKEI CORPORATION.

ENKEI International
1111 Executive Drive, Suite 100
Coppell, TX 75019
800.875.3100